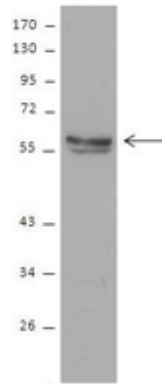


HepG2 whole cell extracts were resolved by electrophoresis, transferred to nitrocellulose, and probed with purified polyclonal anti-c-Src antibody (clone Poly6054). Proteins were visualized using a donkey anti-rabbit-IgG secondary conjugated to HRP and chemiluminescence detection.



NOT FOR HUMAN USE. FOR RESEARCH ONLY. NOT FOR DIAGNOSTIC OR THERAPEUTIC USE.