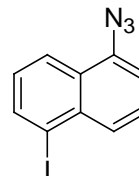


PRODUCT AND SAFETY DATA SHEET

PRODUCT NAME: INA (5-iodonaphthyl-1-azide)**CATALOG #:** 92016**MOLECULAR INFORMATION:** C₁₀H₆IN₃
Mwt: 295.08**PROPERTIES:**

Color & Form	Light yellow solid
Purity	≥ 95% by TLC
Solubility	Soluble in DMSO or DMF

STORAGE AND HANDLING: Store desiccated at ≤ 4°C and protect from light**APPLICATION:** INA is a lipophilic photoreactive probe, which has been used to selectively label membrane-embedded cysteine residues of proteins.¹Ref.: *Proc. Natl. Acad. Sci. USA* **100**, 886(2003)**TOXICITY:** Unknown.

FIRST AID:	Potentially harmful. Avoid prolonged or repeated exposure. Avoid getting in eyes, on skin, or on clothing. Wash thoroughly after handling. If eye or skin contact occurs, wash affected areas with plenty of water for 15 minutes and seek medical advice. In case of inhaling or swallowing, move individual to fresh air and seek medical advice immediately.
-------------------	---

Disclaimer: <i>Materials from Biotium are sold for research use only, and are not intended for food, drug, household, or cosmetic use. Biotium is not liable for any damage resulting from handling or contact with this product.</i>
--