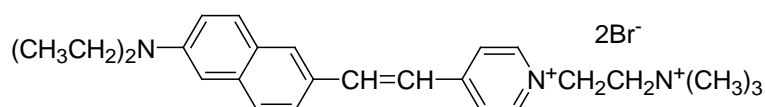


PRODUCT AND SAFETY DATA SHEET

PRODUCT NAME: Di-2-ANEPEQ**CATALOGUE #:** 61013**MOLECULAR INFORMATION:** C₂₆H₃₅Br₂N₃
Mwt: 547.12**PROPERTIES:**

Color & Form	Dark red solid
Purity	≥95% by TLC
Solubility	Soluble in water, EtOH or DMSO
Absorption/Emission	530nm /720nm (EtOH)
Extinction Coefficient	30,000

STORAGE AND HANDLING:

Store desiccated at ≤ -20°C and protect from light especially in solution.

APPLICATION:

Di-2-ANEPEQ, also called JPW1114, is a fast-responding membrane potential dye. It is highly water-soluble and is usually introduced into cells by microinjection. The dye can also be applied to brain tissues topically.

Ref.: 1) *Biol. Bull.* **198**, 1(2000); 2) *Proc. Natl. Acad. Sci. USA* **94**, 7621(1997).**TOXICITY:**

Unknown.

FIRST AID:

Potentially harmful. Avoid prolonged or repeated exposure. Avoid getting in eyes, on skin, or on clothing. Wash thoroughly after handling. If eye or skin contact occurs, wash affected areas with plenty of water for 15 minutes and seek medical advice. In case of inhaling or swallowing, move individual to fresh air and seek medical advice immediately.

Disclaimer: Materials from Biotium are sold for research use only, and are not intended for food, drug, household, or cosmetic use. Biotium is not liable for any damage resulting from handling or contact with this product.