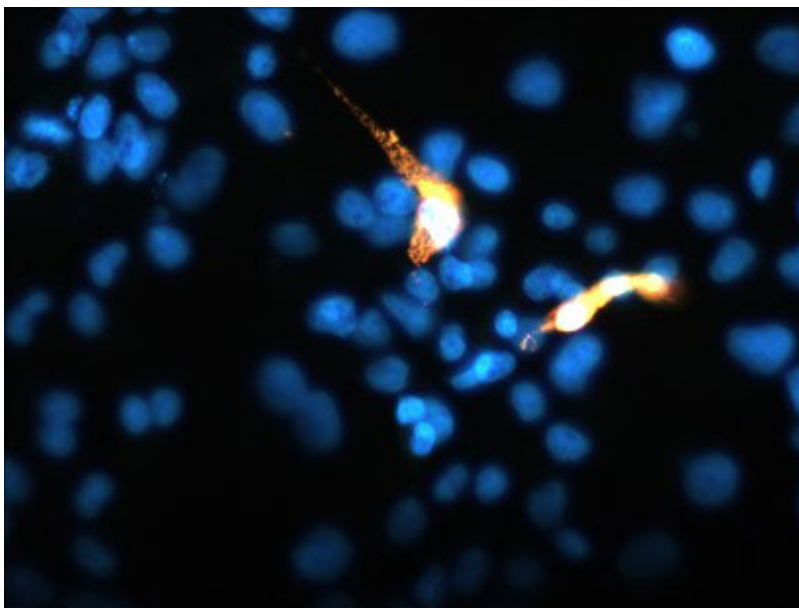
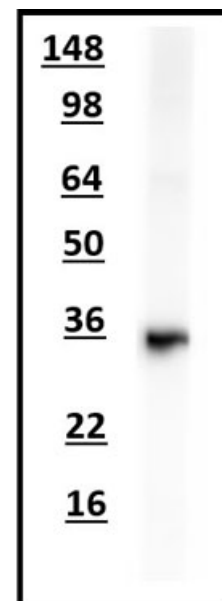


**Product Datasheet****Chickens make *better* antibodies.****Anti-TREM2 Antibody****Overview**

<b>Catalog #</b>	TREM2-0100 (500 $\mu$ L size) or TREM2-0020 (100 $\mu$ L size)
<b>Concentration</b>	0.2 mg/mL
<b>Host Species</b>	Chicken Polyclonal
<b>Format</b>	Affinity purified
<b>Buffer</b>	Phosphate-buffered (10 mM) isotonic (0.9%, w/v) saline ("PBS," pH 7.2) with sodium azide (0.02%, w/v) added as a preservative.
<b>Applications</b>	ICC 1:100-1:500 WB 1:500-1:1000
<b>Species Reactivity</b>	Human, Mouse, and Rat
<b>Immunogen</b>	Purified recombinant extracellular domain of human TREM2 (Uniprot Q9NZC2) expressed in <i>E.Coli</i>
<b>Molecular Weight</b>	36 kDa
<b>Cite this Antibody</b>	Aves Labs Cat# TREM2-0100, or Aves Labs Cat# TREM2-0020; RRID: AB_2910558

**Images**

Immunofluorescence of TREM2-FLAG transfected COS-7 cells using chicken  $\alpha$ -TREM2 (green) and mouse  $\alpha$ -flag tag (red). Yellow/orange staining shows 100% correspondence between the two antibodies for recognition of transfected cells. Blue staining is DAPI and stains nuclei of both transfected and untransfected cells.



Western blot of rat brain membrane lysate using chicken  $\alpha$ -TREM2 showing specific immunolabeling of the endogenous TREM2 at  $\sim$ 35kDa.

## Details

---

<b>Target Description</b>	Triggering receptor expressed on myeloid cells 2, TREM2, is a type I transmembrane innate immune receptor predominantly expressed by microglia in the central nervous system and is genetically linked to the risk for Alzheimer's disease (Schmid, C.D., et al., 2002). TREM2 has been shown to be a specific marker for alternatively activated microglia known as M2 cells (Cherry, J.D. et al., 2014). TREM2 binds to its adaptor, DNAX-activating protein (DAP12) on the surface of microglia to enact innate immune responses and downstream cellular responses or signaling pathways (Jay,T.R, et al., 2017). TREM2 has important roles in microglial phagocytosis of apoptotic neurons, damaged myelin, and amyloid plaques (Gratuze, M., et al., 2018). In early brain development, TREM2 is essential for synaptic pruning (Filipello, F. et al., 2018).
<b>Purification Method</b>	Eggs from hens hyperimmunized with target were used to prepare an IgY fraction which was then subjected to antigen-specific affinity purification
<b>Quality Control Tests</b>	Each new lot of this antibody is tested to confirm that it recognizes a single immunoreactive band of expected molecular weight when used to probe brain lysate.
<b>Storage</b>	Store at 4°C in the dark. Under these conditions, the antibodies should have a shelf life of at least twelve months, provided they remain sterile. For longer term storage, aliquot and freeze to avoid freeze-thaw of the antibody.

## Our Guarantee

---

As an original manufacturer, we are dedicated to creating quality and reproducible antibodies that further your research. We provide personalized customer support from the scientists that made the antibody and offer a free replacement or 100% refund if we cannot resolve an issue. Order today and experience how chickens make better antibodies.

**Note:** For research use only. Not intended for therapeutic or diagnostic use. Use of all products is subject to our terms and conditions, viewable on our website.