

Product Datasheet

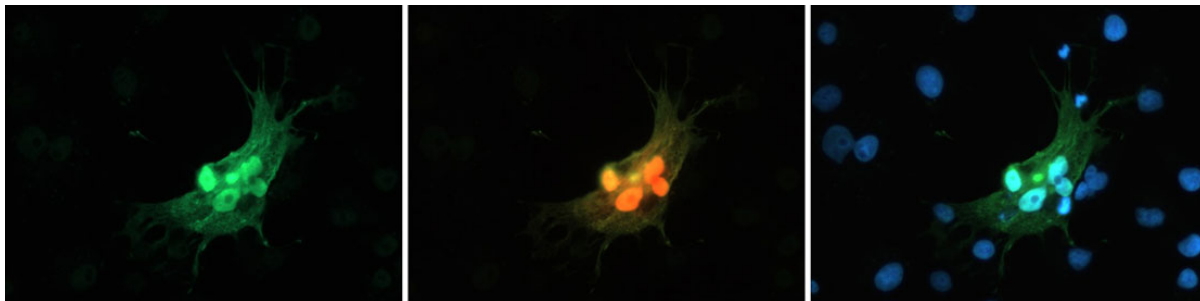
Chickens make *better* antibodies.

Anti-mCherry Antibody

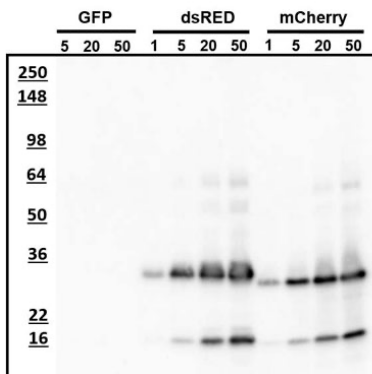
Overview

Catalog #	MCHERRY-0100 (500 μ L size) or MCHERRY-0020 (100 μ L size)
Concentration	0.2 mg/mL
Host Species	Chicken Polyclonal
Format	Affinity purified
Buffer	Phosphate-buffered (10 mM) isotonic (0.9%, w/v) saline ("PBS," pH 7.2) with sodium azide (0.02%, w/v) added as a preservative.
Applications	ICC 1:100-1:500 WB 1:500-1:1000
Species Reactivity	N/A
Immunogen	Purified recombinant mCherry (Uniprot X5DSL3) expressed in <i>E.Coli</i>
Molecular Weight	27 KDa for native monomer
Cite this Antibody	Aves Labs Cat# MCHERRY-0100, or MCHERRY-0020; RRID: AB_2910557

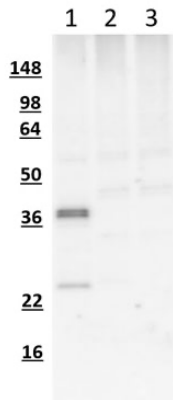
Images



Immunofluorescence of COS7 cells expressing mCherry using chicken anti-mCherry antibody (green) and showing mCherry autofluorescence (red). Blue is DAPI nuclear stain showing nuclei of both transfected and untransfected cells. Staining shows 100% correspondence between chicken anti-mCherry signal and mCherry autofluorescence in transfected cells.



Western blotting of recombinant fluorescent proteins with AvesLabs Chicken anti-mCherry antibody. The indicated (nanogram) amounts of each purified recombinant fluorescent protein was loaded on a gel and analyzed by Western blotting. AvesLabs Chicken anti-mCherry antibody recognizes ng amounts of mCherry protein and the related dsRED protein but does not show any reactivity with GFP.



Western blot of COS7 cells transfected with mCherry-myc-FLAG (lane 1), GFP (lane 2), or mock transfected cells (lane 3) using chicken α -mCherry antibody showing the expected staining for mCherry in lane 1 and no staining in GFP or untransfected cells. The ~37kDa major band in lane 1 represents full-length mCherry-myc-FLAG while the shorter ~24kDa band represents an mCherry degradation product.

Details

Target Description

mCherry is a red fluorescent protein derived from DsRed which is isolated from disc corals and related to GFP (green fluorescent protein) (Shaner et al., 2004). Fluorescent proteins are commonly used to tag proteins in order to localize their expression in both cultured cells and in vivo. Antibodies against fluorescent proteins such as mCherry are especially useful when amplification of the fluorescent signal is necessary or desired. Our chicken anti-mCherry antibody is a highly sensitive reagent for detection of mCherry by western blot, immunocytochemistry, and immunohistochemistry.

Purification Method

Eggs from hens hyperimmunized with target were used to prepare an IgY fraction which was then subjected to antigen-specific affinity purification

Quality Control Tests

Each new lot of this antibody is tested by Western blot on an mCherry overexpression cell lysate.

Storage

Store at 4°C in the dark. Under these conditions, the antibodies should have a shelf life of at least twelve months, provided they remain sterile. For longer term storage, aliquot and freeze to avoid freeze-thaw of the antibody.

Our Guarantee

As an original manufacturer, we are dedicated to creating quality and reproducible antibodies that further your research. We provide personalized customer support from the scientists that made the antibody and offer a free replacement or 100% refund if we cannot resolve an issue. Order today and experience how chickens make better antibodies.

Note: For research use only. Not intended for therapeutic or diagnostic use. Use of all products is subject to our terms and conditions, viewable on our website.