

## Product Datasheet

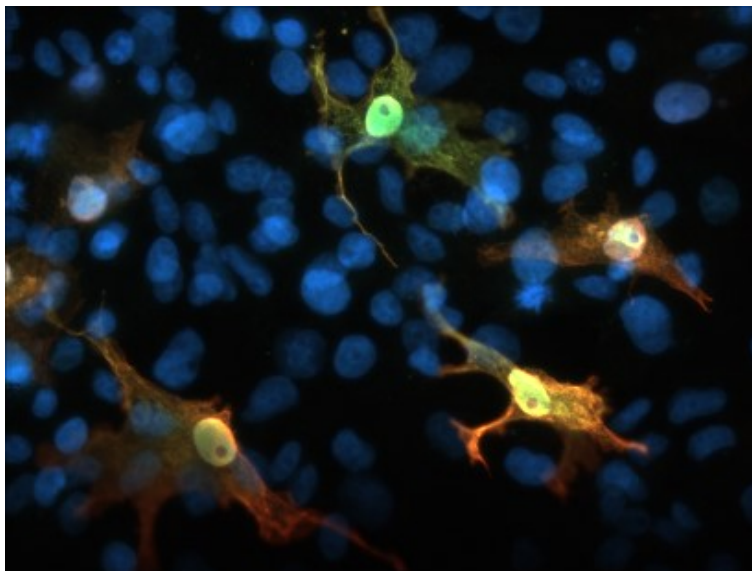
Chickens make *better* antibodies.

## Anti-IBA1/AIF1 Antibody

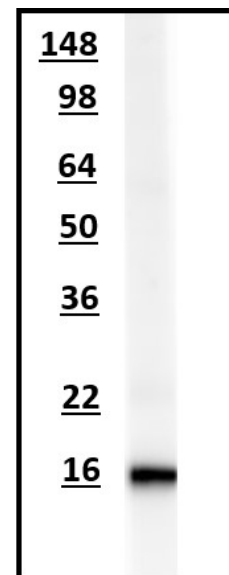
## Overview

<b>Catalog #</b>	IBA1-0100, IBA1-0020
<b>Concentration</b>	0.2 mg/mL
<b>Host Species</b>	Chicken Polyclonal
<b>Format</b>	Affinity purified
<b>Buffer</b>	Phosphate-buffered (10 mM) isotonic (0.9%, w/v) saline ("PBS," pH 7.2) with sodium azide (0.02%, w/v) added as a preservative.
<b>Applications</b>	ICC 1:100-1:500 WB 1:500-1:1000
<b>Species Reactivity</b>	Human, Mouse, and Rat
<b>Immunogen</b>	Purified recombinant human full-length IBA1/AIF1 (Uniprot P55008) expressed in <i>E.Coli</i>
<b>Molecular Weight</b>	17 kDa
<b>Cite this Antibody</b>	Aves Labs Cat# IBA1, RRID: AB_2910556

## Images



Immunofluorescence of AIF1/IBA1-FLAG transfected COS-7 cells using chicken  $\alpha$ -AIF1/IBA1 (green) and mouse  $\alpha$ -flag tag (red). Yellow/orange staining shows 100% correspondence between the two antibodies for recognition of transfected cells. Blue staining is DAPI and stains nuclei of both transfected and untransfected cells.



Western blot of rat brain membrane lysate using chicken  $\alpha$ -AIF1/IBA1 showing specific immunolabeling of endogenous AIF1/IBA1 at ~17kDa.

## Details

---

<b>Target Description</b>	AIF1, allograft inflammatory factor-1, (also known as Iba1, Ionized calcium binding adaptor molecule 1) is a 17 kDa protein that is a pro-inflammatory molecule that mediates calcium signals (Ito, D. et al 1998). During inflammation, increased expression of AIF1 occurs in microglia, macrophages, T-cells, synoviocytes, and adipocytes (Watano, K., et al, 2001). Expression of AIF-1 has been observed in healthy brains and varies throughout the day, gaining the highest expression in the prefrontal and parietal cortices when sleeping (Romcy-Pereira, R.N, et al, 2009). Increased expression of AIF1 has been observed in several diseases including breast cancer (Liu, S., et al 2008), atherosclerosis (Utans, U., et al, 1995), and rheumatoid arthritis (Kimura, M., et al, 2007).
<b>Purification Method</b>	Eggs from hens hyperimmunized with target were used to prepare an IgY fraction which was then subjected to antigen-specific affinity purification
<b>Quality Control Tests</b>	Each new lot of this antibody is tested to confirm that it recognizes a single immunoreactive band of expected molecular weight when used to probe brain lysate.
<b>Storage</b>	Store at 4°C in the dark. Under these conditions, the antibodies should have a shelf life of at least twelve months, provided they remain sterile. For longer term storage, aliquot and freeze to avoid freeze-thaw of the antibody.

## Our Guarantee

---

As an original manufacturer, we are dedicated to creating quality and reproducible antibodies that further your research. We provide personalized customer support from the scientists that made the antibody and offer a free replacement or 100% refund if we cannot resolve an issue. Order today and experience how chickens make better antibodies.

**Note:** For research use only. Not intended for therapeutic or diagnostic use. Use of all products is subject to our terms and conditions, viewable on our website.