

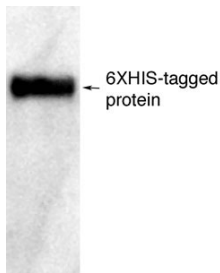
**Product Datasheet****Chickens make *better* antibodies.****Polyhistidine Anti-6XHIS (for Westerns) Antibody****Overview**

---

<b>Catalog #</b>	HIS-W-1010 (100 $\mu$ L size) or HIS-W-1040 (400 $\mu$ L size)
<b>Concentration</b>	10 mg/mL
<b>Host Species</b>	Chicken Polyclonal
<b>Format</b>	Mixture of IgY fraction and affinity-purified antibodies
<b>Buffer</b>	Sodium phosphate-buffered (10 mM) isotonic (0.9%, w/v) saline ("PBS," pH 7.2) (50% by volume) with glycerol (50% by volume) as an anti-freezing agent and sodium azide (0.02%, w/v) as a preservative
<b>Applications</b>	WB 1:5000-1:10000
<b>Species Reactivity</b>	N/A
<b>Immunogen</b>	Synthetic peptide
<b>Molecular Weight</b>	N/A
<b>Cite this Antibody</b>	Aves Labs Cat# HIS-W, RRID: AB_2313518

**Images**

---



Anti-Polyhistidine Anti-6XHIS  
(for Western) Antibody

**Details**

---

**Target Description** The synthetic peptide 6X-Histidine (HHHHHH).

<b>Purification Method</b>	Chickens were immunized with the 6X-Histidine peptide conjugated to keyhole limpet hemocyanin (KLH) and emulsified in Freund's adjuvants. After multiple injections, eggs were collected from the hens, IgY fractions were prepared from the yolks, and then affinity-purified antibodies were prepared using 6X-Histidine peptide conjugated to an agarose matrix. The final product is a mixture of both affinity-purified antibodies (25 µg/mL) and purified IgY (10 mg/mL), mixed with glycerol 1:1 (v/v) (to prevent freezing at -20°C), augmented with sodium azide and then filter-sterilized.
<b>Quality Control Tests</b>	This antibody preparation was analyzed by western blotting (at a dilution of 1:10000) using tissue extracts expressing a recombinant protein tagged with the 6X-HIS marker. Secondary antibodies were HRP-labeled affinity-purified goat anti-chicken IgY (1:5000 dilution, Aves Labs Cat.# H-1004).
<b>Storage</b>	Store at -20°C in the dark. Under these conditions, the antibodies should have a shelf life of at least twelve months, provided they remain sterile.

## Our Guarantee

---

As an original manufacturer, we are dedicated to creating quality and reproducible antibodies that further your research. We provide personalized customer support from the scientists that made the antibody and offer a free replacement or 100% refund if we cannot resolve an issue. Order today and experience how chickens make better antibodies.

**Note:** For research use only. Not intended for therapeutic or diagnostic use. Use of all products is subject to our terms and conditions, viewable on our website.