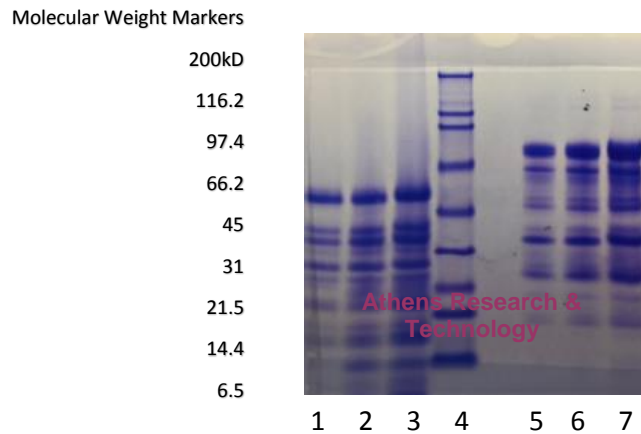


Athens Research & Technology

110 Trans Tech Drive Athens, GA 30601 USA
PHONE: 706-546-0207 • FAX: 706-546-7395 • EMAIL: ARTBIO@ATHENSRESEARCH.COM
www.athensresearch.com

Gel Scan of Representative Lot Kallikrein, Cynomolgus Monkey Plasma ART Catalog No. 16-16-110112-CM



SDS-PAGE:

4-12% Bis-Tris NuPAGE gel

1. Kallikrein - 5 µg (reduced /heat)
2. Kallikrein - 10 µg (reduced /heat)
3. Kallikrein - 20 µg (reduced /heat)
4. BRMW Standard (BIO-RAD Cat. No. 161-0317)
5. Kallikrein - 5 µg (non-reduced / no heat)
6. Kallikrein - 10 µg (non-reduced /no heat)
7. Kallikrein - 20 µg (non-reduced /no heat)

Molecular Weight: ~ 86,000 – 88,000 Daltons
(based on human value)

Protein Determination:

Extinction Coefficient ($EC_{0.1\%, 1\text{cm}}$ pathway) of 1.06
(based on human value)

Physical Specifications:

Frozen

Purity: $\geq 95\%$ by SDS-PAGE

Considerations:

Storage Conditions: $\leq -70^\circ\text{C}$

Stability: > 1 year

Buffer: 20mM Tris pH7.8, 100mM NaCl

Virginia B. Patel PhD

Athens Research & Technology

110 Trans Tech Drive Athens, GA 30601 USA
PHONE: 706-546-0207 • FAX: 706-546-7395 • EMAIL: ARTBIO@ATHENSRESEARCH.COM
www.athensresearch.com

Product Datasheet

| | |
|------------------------|--|
| Product: | Kallikrein, Cynomolgus Monkey Plasma |
| Catalog Number: | 16-16-110112-CM |
| Description: | Frozen |
| Buffer: | 20mM Tris pH7.8, 100mM NaCl |
| Purity: | >=95% by SDS-PAGE |
| Molecular Weight: | MW 86,000 – 88,000 Daltons (based on human value) |
| Protein Determination: | Extinction Coefficient (EC _{0.1%, 1cm pathway}) of 1.06 (based on human value) |
| Storage: | <= -70o C |
| Stability: | > 1 year |
| Available Packaging: | 50 µg per vial |
| Source: | Cynomolgus Monkey Plasma |
| Testing: | Prepared from donor monkeys that have been individually tested for B-Virus (Herpes Virus Simiae) and found to be negative. |

Athens Research & Technology products are laboratory reagents and are not to be administered to humans or used for any drug purpose.

For research use only.