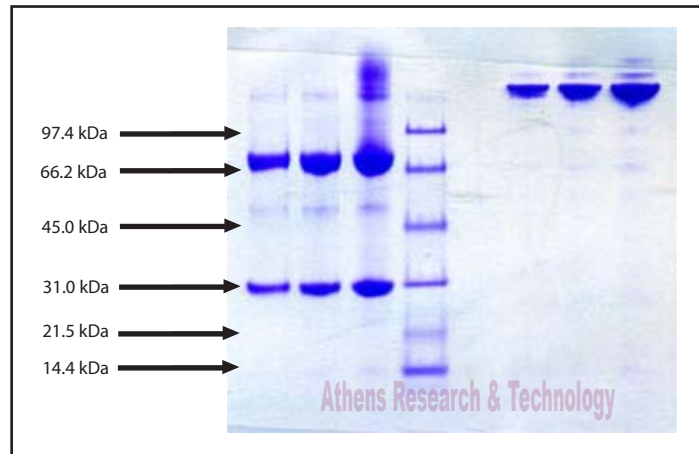


# Athens Research & Technology

110 Trans Tech Drive Athens, GA 30601 USA  
PHONE: 706-546-0207 • FAX: 706-546-7395 • EMAIL: ARTBIO@ATHENSRESEARCH.COM

## Gel Scan of Representative Lot

Immunoglobulin E, Human Myeloma Plasma, Kappa  
ART Catalog No. 16-16-090705-M-Kappa



SDS-PAGE:  
4 - 12% Bis-Tris-HCl NuPAGE gel

1. IgE - 5 µg (reduced / heated)
2. IgE - 10 µg (reduced / heated)
3. IgE - 20 µg (reduced / heated)
4. LMW Standard (BIO-RAD Cat. No. 161-0304)
5. IgE - 5 µg (non-reduced / no heat)
6. IgE - 10 µg (non-reduced / no heat)
7. IgE - 20 µg (non-reduced / no heat)

**Molecular Weight:** ~ 190,000

### Protein Determination:

Extinction Coefficient (E)  $\frac{0.1\% \text{ at } 280\text{nm}}{1\text{cm pathway}} = 1.46$

### Physical Specifications:

Frozen  
Purity:  $\geq 95\%$  by SDS-PAGE

### Considerations:

Storage Conditions:  $\leq -20^\circ\text{C}$

Stability  $> 1$  year

Buffer: 15 mM phosphate, pH 7.4, with 150 mM NaCl  
and 0.05%  $\text{NaN}_3$

Virginia B. Patel PhD

# Athens Research & Technology

110 Trans Tech Drive Athens, GA 30601 USA

PHONE: 706-546-0207 • FAX: 706-546-7395 • EMAIL: ARTBIO@ATHENSRESEARCH.COM

---

## Product Datasheet

Product:	Immunoglobulin E, Human Myeloma Plasma, Kappa
Catalog Number:	16-16-090705-M-Kappa
Description:	Frozen
Buffer:	15 mM potassium phosphate, pH 7.4, 150 mM NaCl and 0.05% NaN <sub>3</sub>
Purity:	>=95% by SDS-PAGE
Molecular Weight:	MW ~ 190,000
Protein Determination:	Extinction Coefficient (E) $\frac{0.1\% \text{ at } 280\text{nm}}{1\text{cm pathway}} = 1.46$
Storage:	<= -20° C
Stability:	> 1 year
Available Packaging:	100 µg per vial Larger aliquots upon request
Source:	Human Myeloma Plasma, Kappa
Testing:	Shown to be non reactive for HBsAg, anti-HCV, anti-HBc, and negative for anti-HIV 1 & 2 by FDA approved tests.

**Athens Research & Technology products are laboratory reagents and are not to be administered to humans or used for any drug purpose.  
For research use only.**

# Athens Research & Technology

---

110 Trans Tech Drive Athens, GA 30601 USA  
PHONE: 706-546-0207 • FAX: 706-546-7395 • EMAIL: ARTBIO@ATHENSRESEARCH.COM  
www.athensresearch.com  
ISO9001:2008

---

## Certificate Of Origin

Product Name:	Immunoglobulin E, Human Myeloma Kappa Plasma
Catalog Number:	16-16-090705-M-Kappa
Lot Number:	Information applies to all lots produced.
Manufacturing Information:	The methods and controls used in this facility for manufacturing, processing, packaging and holding of our products are in accordance with ISO9001:2008 Quality Management System.
Manufacturing Site:	Athens Research & Technology Inc., Athens, Georgia, USA
Raw Material Information:	The product contains no materials directly of animal origin and has not been in contact with products of animal origin in the course of its purification.
Country of Origin (manufacturing):	United States
Biological Source Material (COO):	United States
Donor Consent:	The raw material used in the purification of this product has been obtained from an FDA licensed collection center. Further the donor or the donor's next of kin has given by signature full informed consent for the material to be used in commercial scientific research, including the sharing, transferring, or selling of samples to third parties involved in this research. The raw material was obtained in an ethical manner in full compliance with national legislation, and the donor identity is held as confidential information by the licensed collection center.

**Athens Research & Technology products are laboratory reagents and are not to be administered to humans or used for any drug purpose.  
For research use or for use in further manufacturing.**