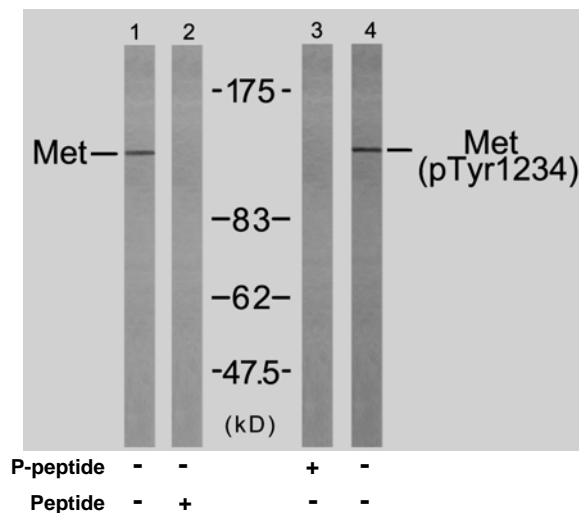


Rabbit anti Met (pTyr1234)

- Catalog Number:** pAP11227
Amount: 100µl (for 10 Western Blotting)
Swiss-Prot No. : P08581
All Names: MET Hepatocyte growth factor receptor [Precursor]
All Sites: Human: Tyr1234; Mouse: Tyr1232; Rat: Tyr1235
Form of Antibody: Rabbit IgG in phosphate buffered saline (without Mg²⁺ and Ca²⁺), pH 7.4, 150mM NaCl, 0.02% sodium azide and 50% glycerol.
Storage/Stability: Store at -20°C/1 year
Immunogen: The antiserum was produced against synthesized phosphopeptide derived from human Met around the phosphorylation site of tyrosine 1234 (K-E-Y^P-Y-S).
Purification: The antibody was affinity-purified from rabbit antiserum by affinity-chromatography using epitope-specific phosphopeptide. The antibody against non-phosphopeptide was removed by chromatography using non-phosphopeptide corresponding to the phosphorylation site.
Specificity/Sensitivity: Met (phospho-Tyr1234) antibody detects endogenous levels of Met only when phosphorylated at tyrosine 1234.
Reactivity: Human, Mouse, Rat
Applications: WB: 1:1000
References: Gherardi E. et al. (2003). Proc Natl Acad Sci U S A. 100(21): 12039-12044.
 Shiu SH. et al. (2001) Proc Natl Acad Sci U S A. 98(19): 10763-10768.
 Hughes AL. et al. (2001) Genome Res. 11(5): 771-780.
 Onuchic LF. et al. (2002) Am J Hum Genet. 70(5): 1305-1317.



Western blot analysis of extracts from HepG2 cells using Met (Ab-1234) antibody (AP21220, Line 1 and 2) and Met (phospho- Tyr1234) antibody (pAP11227, Line 3 and 4).

For Research Use Only

Contact & Ordering Information: Angio-Proteomie, 11 Park Drive, Suite 12, Boston, MA 02215, USA. Fax: (480) 247-4337, angioproteomie@gmail.com