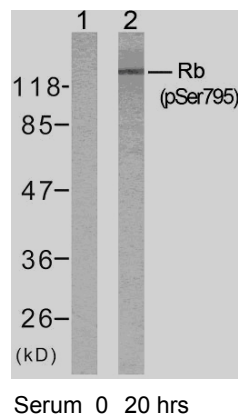




11 Park Drive, Suite 12
Boston, MA 02215

Rabbit anti Rb (pSer795)

- Catalog Number:** pAP11130
Amount: 100µl (for 10 Western Blotting)
Form of Antibody: Rabbit IgG in phosphate buffered saline (without Mg²⁺ and Ca²⁺), pH 7.4, 150mM NaCl, 0.02% sodium azide and 50% glycerol.
Storage/Stability: Store at -20°C/1 year
Immunogen: The antiserum was produced against synthesized phosphopeptide derived from human Rb around the phosphorylation site of serine 795 (P-S-S^P-P-L).
Purification: The antibody was affinity-purified from rabbit antiserum by affinity-chromatography using epitope-specific phosphopeptide. The antibody against non-phosphopeptide was removed by chromatography using non-phosphopeptide corresponding to the phosphorylation site.
Specificity/Sensitivity: Rb (phospho-Ser795) antibody detects endogenous levels of Rb only when phosphorylated at serine 795.
Reactivity: Human, Mouse, Rat
Applications: WB: 1:1000
Swiss-Prot No.: P06400
References: Rubin SM, et al. (2005) Cell.123 (6): 1093-1106.
Wallick CJ, et al. (2005) Oncogene.24 (36): 5606-5618.
Leibundgut K, et al. (2005) Stem Cells. 23(7):1002-1011.
Roesch A, et al. (2005) Mod Pathol.18 (4): 565-572.



Western blot analysis of extracts from K562 cells untreated or treated with 10% serum after 48 hours of starvation, using Rb (phospho-Ser795) antibody (pAP11130).

For Research Use Only

Contact & Ordering Information: Angio-Proteomie, 11 Park Drive, Suite 12, Boston, MA 02215, USA. Fax: (480) 247-4337, angioproteomie@gmail.com