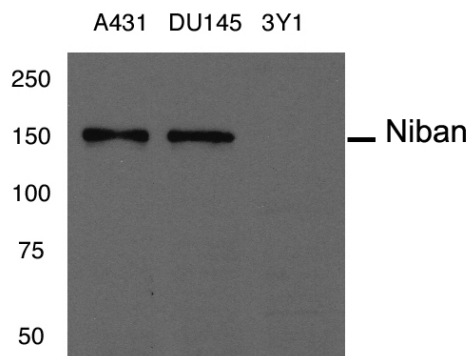




11 Park Drive, Suite 12  
Boston, MA 02215

## Rabbit anti Niban

- Catalog Number:** AP21401  
**Amount:** 100µl (For 10 Western Blotting)  
**Swiss-Prot No. :** Q9BZQ8  
**Form of Antibody:** Rabbit IgG in phosphate buffered saline (without Mg<sup>2+</sup> and Ca<sup>2+</sup>), pH 7.4, 150mM NaCl, 0.02% sodium azide and 50% glycerol.  
**Storage/Stability:** Store at -20°C/1 year  
**Immunogen:** The antiserum was produced against a synthesized peptide Corresponding to the 908-920 amino-acid sequence from human niban protein ("KDDVKEGEGGQES").  
**Purification:** The antibody was affinity-purified from rabbit antiserum by affinity-chromatography using epitope-specific immunogen.  
**Specificity/Sensitivity:** Niban antibody detects endogenous levels of total Niban protein.  
**Reactivity:** Human  
**Applications:** WB: 1:1000  
**References:** Villén J, et al (2007). Proc Natl Acad Sci U S A. 104(5): 1488-93



Western blot analysis of extract from human A431, DU145 cancer cells and rat 3Y1 fibroblast cells, using niban antibody (AP21401).

**For Research Use Only**

Contact & Ordering Information: Angio-Proteomie, 11 Park Drive, Suite 12, Boston, MA 02215, USA. Fax: (480) 247-4337, [angioproteomie@gmail.com](mailto:angioproteomie@gmail.com)