

## PPIG Ab

Cat.#: AF4766                      Concn.: 1mg/ml                      Mol.Wt.: 110kDa  
Size: 50ul,100ul,200ul              Source: Rabbit                      Clonality: Polyclonal

Application:                      WB 1:500-1:2000

Reactivity:                      Human,Mouse,Rat

Purification:                      The antiserum was purified by peptide affinity chromatography using SulfoLink™ Coupling Resin (Thermo Fisher Scientific).

Specificity:                      PPIG Ab detects endogenous levels of PPIG.

Immunogen:                      A synthesized peptide derived from human PPIG.

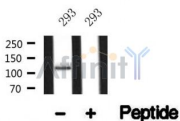
Uniprot:                      Q13427

Subcellular Location:              Nucleus matrix. Nucleus speckle. Colocalizes with RNA splicing factors at nuclear speckles.

Tissue Specificity:              Ubiquitous.

Similarity:                      The RS domain is required for the interaction with the phosphorylated C-terminal domain of RNA polymerase II.

Storage Condition and Buffer:      Rabbit IgG in phosphate buffered saline , pH 7.4, 150mM NaCl, 0.02% sodium azide and 50% glycerol.Store at -20 °C.Stable for 12 months from date of receipt.



Western blot analysis of PPIG in lysates of 293 , using PPIG Ab(AF4766).

**IMPORTANT:** For western blot, incubate membrane with diluted primary Ab in 5% w/v milk , 1X TBS, 0.1% Tween@20 at 4°C with gentle shaking, overnight.

For Research Use Only. Not for use in diagnostic and therapeutic procedures. Not for resale without express authorization.