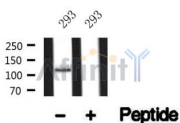


PPIG Ab

Cat.#: AF4766	Concn.: 1mg/ml	Mol.Wt.: 110kDa
Size: 50ul,100ul,200ul	Source: Rabbit	Clonality: Polyclonal

Application:	WB 1:500-1:2000
Reactivity:	Human,Mouse,Rat
Purification:	The antiserum was purified by peptide affinity chromatography using SulfoLink™ Coupling Resin (Thermo Fisher Scientific).
Specificity:	PPIG Ab detects endogenous levels of PPIG.
Immunogen:	A synthesized peptide derived from human PPIG.
Uniprot:	Q13427
Subcellular Location:	Nucleus matrix. Nucleus speckle. Colocalizes with RNA splicing factors at nuclear speckles.
Tissue Specificity:	Ubiquitous.
Similarity:	The RS domain is required for the interaction with the phosphorylated C-terminal domain of RNA polymerase II.
Storage Condition and Buffer:	Rabbit IgG in phosphate buffered saline , pH 7.4, 150mM NaCl, 0.02% sodium azide and 50% glycerol.Store at -20 °C.Stable for 12 months from date of receipt.



Western blot analysis of PPIG in lysates of 293 , using PPIG Ab(AF4766).

IMPORTANT: For western blot, incubate membrane with diluted primary Ab in 5% w/v milk , 1X TBS, 0.1% Tween@20 at 4°C with gentle shaking, overnight.

For Research Use Only. Not for use in diagnostic and therapeutic procedures. Not for resale without express authorization.