

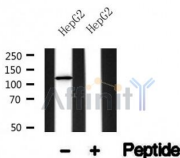
PLD1 Ab

Cat.#: AF4765
Size: 50ul,100ul,200ul

Concn.: 1mg/ml
Source: Rabbit

Mol.Wt.: 120kDa
Clonality: Polyclonal

Application:	WB 1:500-1:2000
Reactivity:	Human,Mouse,Rat
Purification:	The antiserum was purified by peptide affinity chromatography using SulfoLink™ Coupling Resin (Thermo Fisher Scientific).
Specificity:	PLD1 Ab detects endogenous levels of PLD1.
Immunogen:	A synthesized peptide derived from human PLD1.
Uniprot:	Q13393
Subcellular Location:	Cytoplasm > perinuclear region. Endoplasmic reticulum membrane. Golgi apparatus membrane. Late endosome membrane.
Tissue Specificity:	Expressed abundantly in the pancreas and heart and at high levels in brain, placenta, spleen, uterus and small intestine.
Similarity:	Belongs to the phospholipase D family.
Storage Condition and Buffer:	Rabbit IgG in phosphate buffered saline , pH 7.4, 150mM NaCl, 0.02% sodium azide and 50% glycerol.Store at -20 °C.Stable for 12 months from date of receipt.



Western blot analysis of PLD1 in lysates of HepG2 , using PLD1 Ab(AF4765).

IMPORTANT: For western blot, incubate membrane with diluted primary Ab in 5% w/v milk , 1X TBS, 0.1% Tween@20 at 4°C with gentle shaking, overnight.

For Research Use Only. Not for use in diagnostic and therapeutic procedures. Not for resale without express authorization.