

CDC20 Ab

| | | |
|------------------------|----------------|-----------------------|
| Cat.#: AF4759 | Concn.: 1mg/ml | Mol.Wt.: 50KDa |
| Size: 50ul,100ul,200ul | Source: Rabbit | Clonality: Polyclonal |

Application: WB 1:500-1:2000

Reactivity: Human,Mouse,Rat

Purification: The antiserum was purified by peptide affinity chromatography using SulfoLink™ Coupling Resin (Thermo Fisher Scientific).

Specificity: CDC20 Ab detects endogenous levels of CDC20.

Immunogen: A synthesized peptide derived from human CDC20.

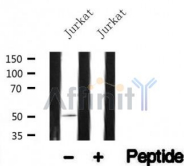
Uniprot: Q12834

Subcellular Location: Cytoskeleton;

Tissue Specificity: Synthesis is initiated at G1/S, protein level peaks in M phase and protein is abruptly degraded at M/G1 transition.

Similarity: Belongs to the WD repeat CDC20/Fizzy family.

Storage Condition and Buffer: Rabbit IgG in phosphate buffered saline , pH 7.4, 150mM NaCl, 0.02% sodium azide and 50% glycerol.Store at -20 °C.Stable for 12 months from date of receipt.



Western blot analysis of CDC20 in lysates of Jurkat , using CDC20 Ab(AF4759).

IMPORTANT: For western blot, incubate membrane with diluted primary Ab in 5% w/v milk , 1X TBS, 0.1% Tween@20 at 4°C with gentle shaking, overnight.

For Research Use Only. Not for use in diagnostic and therapeutic procedures. Not for resale without express authorization.