

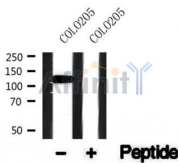
## KIF11/Eg5 Ab

Cat.#: AF4745  
Size: 50ul,100ul,200ul

Concn.: 1mg/ml  
Source: Rabbit

Mol.Wt.: 120 kDa  
Clonality: Polyclonal

Application:	WB 1:500-1:2000
Reactivity:	Human,Mouse,Rat
Purification:	The antiserum was purified by peptide affinity chromatography using SulfoLink™ Coupling Resin (Thermo Fisher Scientific).
Specificity:	KIF11/Eg5 Ab detects endogenous levels of KIF11/Eg5.
Immunogen:	A synthesized peptide derived from human KIF11/Eg5.
Uniprot:	P52732
Subcellular Location:	Cytoplasm. Cytoplasm > cytoskeleton > spindle pole.
Similarity:	Belongs to the TRAFAC class myosin-kinesin ATPase superfamily. Kinesin family. BimC subfamily.
Storage Condition and Buffer:	Rabbit IgG in phosphate buffered saline , pH 7.4, 150mM NaCl, 0.02% sodium azide and 50% glycerol.Store at -20 °C.Stable for 12 months from date of receipt.



Western blot analysis of KIF11/Eg5 in lysates of COLO205, using KIF11/Eg5 Ab(AF4745).

**IMPORTANT:** For western blot, incubate membrane with diluted primary Ab in 5% w/v milk , 1X TBS, 0.1% Tween@20 at 4°C with gentle shaking, overnight.

For Research Use Only. Not for use in diagnostic and therapeutic procedures. Not for resale without express authorization.