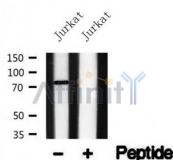


## Etk Ab

Cat.#: AF4744	Concn.: 1mg/ml	Mol.Wt.: 76kDa
Size: 50ul,100ul,200ul	Source: Rabbit	Clonality: Polyclonal

Application:	WB 1:500-1:2000
Reactivity:	Human,Mouse
Purification:	The antiserum was purified by peptide affinity chromatography using SulfoLink™ Coupling Resin (Thermo Fisher Scientific).
Specificity:	Etk Ab detects endogenous levels of Etk.
Immunogen:	A synthesized peptide derived from human Etk.
Uniprot:	P51813
Subcellular Location:	Cytoplasm.
Tissue Specificity:	Highly expressed in cells with great migratory potential, including endothelial cells and metastatic carcinoma cell lines.
Similarity:	SH2 domain mediates interaction with RUFY1.Belongs to the protein kinase superfamily. Tyr protein kinase family. TEC subfamily.
Storage Condition and Buffer:	Rabbit IgG in phosphate buffered saline , pH 7.4, 150mM NaCl, 0.02% sodium azide and 50% glycerol.Store at -20 °C.Stable for 12 months from date of receipt.



Western blot analysis of Etk in lysates of Jurkat , using Etk Ab(AF4744).

**IMPORTANT:** For western blot, incubate membrane with diluted primary Ab in 5% w/v milk , 1X TBS, 0.1% Tween@20 at 4°C with gentle shaking, overnight.

For Research Use Only. Not for use in diagnostic and therapeutic procedures. Not for resale without express authorization.