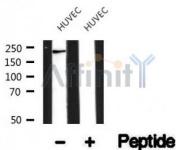


VEGF Receptor 2 Ab

Cat.#: AF4726	Concn.: 1mg/ml	Mol.Wt.: 230kDa
Size: 50ul,100ul,200ul	Source: Rabbit	Clonality: Polyclonal

Application:	WB 1:500-1:2000
Reactivity:	Human,Mouse,Rat
Purification:	The antiserum was purified by peptide affinity chromatography using SulfoLink™ Coupling Resin (Thermo Fisher Scientific).
Specificity:	VEGF Receptor 2 Ab detects endogenous levels of VEGF Receptor 2.
Immunogen:	A synthesized peptide derived from human VEGF Receptor 2.
Uniprot:	P35968
Subcellular Location:	Membrane.
Tissue Specificity:	Detected in cornea (at protein level). Widely expressed.
Similarity:	The second and third Ig-like C2-type (immunoglobulin-like) domains are sufficient for VEGFC binding.Belongs to the protein kinase superfamily. Tyr protein kinase family. CSF-1/PDGF receptor subfamily.
Storage Condition and Buffer:	Rabbit IgG in phosphate buffered saline , pH 7.4, 150mM NaCl, 0.02% sodium azide and 50% glycerol.Store at -20 °C.Stable for 12 months from date of receipt.



Western blot analysis of HUVEC, using VEGF Receptor 2 Ab(AF4726).

IMPORTANT: For western blot, incubate membrane with diluted primary Ab in 5% w/v milk , 1X TBS, 0.1% Tween@20 at 4°C with gentle shaking, overnight.