

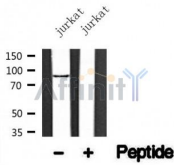
## TrkA /TrkB Ab

Cat.#: AF4690  
Size: 50ul,100ul,200ul

Concn.: 1mg/ml  
Source: Rabbit

Mol.Wt.: 87kDa  
Clonality: Polyclonal

Application:	WB 1:500-1:2000
Reactivity:	Human,Mouse,Rat
Purification:	The antiserum was purified by peptide affinity chromatography using SulfoLink™ Coupling Resin (Thermo Fisher Scientific).
Specificity:	TrkA /TrkB Ab detects endogenous levels of TrkA /TrkB.
Immunogen:	A synthesized peptide derived from human TrkA /TrkB.
Uniprot:	P04629
Subcellular Location:	Cell membrane. Early endosome membrane. Late endosome membrane. Internalized to endosomes upon binding of NGF or NTF3 and further transported to the cell body via a retrograde axonal transport. Localized at cell membrane and early endosomes before nerve growth factor (NGF) stimulation. Recruited to late endosomes after NGF stimulation. Colocalized with RAPGEF2 at late endosomes (By similarity).
Tissue Specificity:	Isoform TrkA-I is found in most non-neuronal tissues. Isoform TrkA-II is primarily expressed in neuronal cells. TrkA-III is specifically expressed by pluripotent neural stem and neural crest progenitors.
Similarity:	The transmembrane domain mediates interaction with KIDINS220.The extracellular domain mediates interaction with NGFR.Belongs to the protein kinase superfamily. Tyr protein kinase family. Insulin receptor subfamily.
Storage Condition and Buffer:	Rabbit IgG in phosphate buffered saline , pH 7.4, 150mM NaCl, 0.02% sodium azide and 50% glycerol.Store at -20 °C.Stable for 12 months from date of receipt.



Western blot analysis of TrkA /TrkB in lysates of Jurkat, using TrkA /TrkB Ab(AF4690).

**IMPORTANT:** For western blot, incubate membrane with diluted primary Ab in 5% w/v milk, 1X TBS, 0.1% Tween@20 at 4°C with gentle shaking, overnight.

For Research Use Only. Not for use in diagnostic and therapeutic procedures. Not for resale without express authorization.