

## EPHA4 Ab

Cat.#: AF4674                      Concn.: 1mg/ml                      Mol.Wt.: 135kDa  
Size: 50ul,100ul,200ul              Source: Rabbit                      Clonality: Polyclonal

Application:                      WB 1:500-1:2000

Reactivity:                      Human,Mouse,Rat

Purification:                      The antiserum was purified by peptide affinity chromatography using SulfoLink™ Coupling Resin (Thermo Fisher Scientific).

Specificity:                      EPHA4 Ab detects endogenous levels of EPHA4.

Immunogen:                      A synthesized peptide derived from human EPHA4.

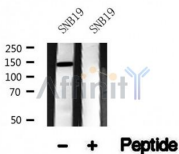
Uniprot:                      P54764

Subcellular Location:              Membrane.

Tissue Specificity:              Ubiquitous.

Similarity:                      The protein kinase domain mediates interaction with NGEF.Belongs to the protein kinase superfamily. Tyr protein kinase family. Ephrin receptor subfamily.

Storage Condition and Buffer:      Rabbit IgG in phosphate buffered saline , pH 7.4, 150mM NaCl, 0.02% sodium azide and 50% glycerol.Store at -20 °C.Stable for 12 months from date of receipt.



Western blot analysis of EPHA4 in lysates of SNB19, using EPHA4 Ab(AF4674).

**IMPORTANT:** For western blot, incubate membrane with diluted primary Ab in 5% w/v milk , 1X TBS, 0.1% Tween@20 at 4°C with gentle shaking, overnight.

For Research Use Only. Not for use in diagnostic and therapeutic procedures. Not for resale without express authorization.