

## Histone H4 Ab

Cat.#: AF4657                      Concn.: 1mg/ml                      Mol.Wt.: 11kDa  
Size: 50ul,100ul,200ul            Source: Rabbit                      Clonality: Polyclonal

Application:                      WB 1:500-1:2000

Reactivity:                      Human,Mouse,Rat,Pig,Bovine

Purification:                      The antiserum was purified by peptide affinity chromatography using SulfoLink™ Coupling Resin (Thermo Fisher Scientific).

Specificity:                      Histone H4 Ab detects endogenous levels of Histone H4.

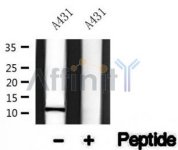
Immunogen:                      A synthesized peptide derived from human Histone H4.

Uniprot:                          P62805

Subcellular Location:            Nucleus. Chromosome.

Similarity:                      Belongs to the histone H4 family.

Storage Condition and Buffer:    Rabbit IgG in phosphate buffered saline , pH 7.4, 150mM NaCl, 0.02% sodium azide and 50% glycerol.Store at -20 °C.Stable for 12 months from date of receipt.



Western blot analysis of Histone H4 in lysates of A431, using Histone H4 Ab(AF4657).

**IMPORTANT:** For western blot, incubate membrane with diluted primary Ab in 5% w/v milk , 1X TBS, 0.1% Tween@20 at 4°C with gentle shaking, overnight.

For Research Use Only. Not for use in diagnostic and therapeutic procedures. Not for resale without express authorization.