

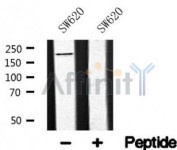
LRP5 Ab

Cat.#: AF4645
Size: 50ul,100ul,200ul

Concn.: 1mg/ml
Source: Rabbit

Mol.Wt.: 200kDa
Clonality: Polyclonal

Application:	WB 1:500-1:2000
Reactivity:	Human,Mouse,Rat
Purification:	The antiserum was purified by peptide affinity chromatography using SulfoLink™ Coupling Resin (Thermo Fisher Scientific).
Specificity:	LRP5 Ab detects endogenous levels of LRP5.
Immunogen:	A synthesized peptide derived from human LRP5.
Uniprot:	O75197
Subcellular Location:	Membrane. Endoplasmic reticulum. Chaperoned to the plasma membrane by MESD.
Tissue Specificity:	Widely expressed, with the highest level of expression in the liver and in aorta.
Similarity:	Belongs to the LDLR family.
Storage Condition and Buffer:	Rabbit IgG in phosphate buffered saline , pH 7.4, 150mM NaCl, 0.02% sodium azide and 50% glycerol.Store at -20 °C.Stable for 12 months from date of receipt.



Western blot analysis of LRP5 in lysates of SW620, using LRP5 Ab(AF4645).

IMPORTANT: For western blot, incubate membrane with diluted primary Ab in 5% w/v milk , 1X TBS, 0.1% Tween@20 at 4°C with gentle shaking, overnight.

For Research Use Only. Not for use in diagnostic and therapeutic procedures. Not for resale without express authorization.