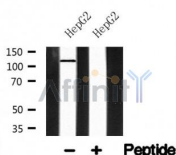


KSR1 Ab

Cat.#: AF4641	Concn.: 1mg/ml	Mol.Wt.: 120kDa
Size: 50ul,100ul,200ul	Source: Rabbit	Clonality: Polyclonal

Application:	WB 1:500-1:2000
Reactivity:	Human,Mouse,Rat
Purification:	The antiserum was purified by peptide affinity chromatography using SulfoLink™ Coupling Resin (Thermo Fisher Scientific).
Specificity:	KSR1 Ab detects endogenous levels of KSR1.
Immunogen:	A synthesized peptide derived from human KSR1.
Uniprot:	Q8IVT5
Subcellular Location:	Endoplasmic reticulum;Plasma membrane;
Similarity:	The protein kinase domain is predicted to be catalytically inactive. The domain is sufficient for KSR1 and KSR1-mediated MAP2K1 and MAP2K2 membrane localization. The domain is required but not sufficient for MAP kinase-mediated inhibition of ELK1 phosphorylation (PubMed:10409742).The protein kinase domain is predicted to be catalytically inactive. The domain is sufficient for KSR1 and KSR1-mediated MAP2K1 and MAP2K2 membrane localization. The domain is required but not sufficient for MAP kinase-mediated inhibition of ELK1 phosphorylation.The N-terminal region mediates interaction with BRAF and with membranes.Belongs to the protein kinase superfamily. TKL Ser/Thr protein kinase family.
Storage Condition and Buffer:	Rabbit IgG in phosphate buffered saline , pH 7.4, 150mM NaCl, 0.02% sodium azide and 50% glycerol.Store at -20 °C.Stable for 12 months from date of receipt.



Western blot analysis of KSR1 in lysates of HepG2, using KSR1 Ab(AF4641).

in 5% w/v milk , 1X TBS, 0.1% Tween@20 at 4°C with gentle shaking,
overnight.

For Research Use Only. Not for use in diagnostic and therapeutic
procedures. Not for resale without express authorization.