

## SMURF1 Ab

Cat.#: AF4623  
Size: 50ul,100ul,200ul

Concn.: 1mg/ml  
Source: Rabbit

Mol.Wt.: 81kDa  
Clonality: Polyclonal

**Application:** WB 1:500-1:2000

**Reactivity:** Human,Mouse,Rat

**Purification:** The antiserum was purified by peptide affinity chromatography using SulfoLink™ Coupling Resin (Thermo Fisher Scientific).

**Specificity:** SMURF1 Ab detects endogenous levels of SMURF1.

**Immunogen:** A synthesized peptide derived from human SMURF1.

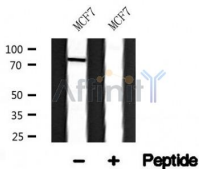
**Uniprot:** Q9HCE7

**Subcellular Location:** Cytoplasm.

**Tissue Specificity:** Expressed in melanocytes (PubMed:23999003).

**Similarity:** The C2 domain mediates membrane localization and substrate selection.

**Storage Condition and Buffer:** Rabbit IgG in phosphate buffered saline , pH 7.4, 150mM NaCl, 0.02% sodium azide and 50% glycerol.Store at -20 °C.Stable for 12 months from date of receipt.



Western blot analysis of SMURF1 in lysates of MCF7, using SMURF1 Ab(AF4623).

**IMPORTANT:** For western blot, incubate membrane with diluted primary Ab in 5% w/v milk , 1X TBS, 0.1% Tween@20 at 4°C with gentle shaking, overnight.

For Research Use Only. Not for use in diagnostic and therapeutic procedures. Not for resale without express authorization.