

PER1 Ab

Cat.#: AF4602	Concn.: 1mg/ml	Mol.Wt.: 136kDa
Size: 50ul,100ul,200ul	Source: Rabbit	Clonality: Polyclonal

Application: WB 1:500-1:2000

Reactivity: Human,Mouse

Purification: The antiserum was purified by peptide affinity chromatography using SulfoLink™ Coupling Resin (Thermo Fisher Scientific).

Specificity: PER1 Ab detects endogenous levels of PER1.

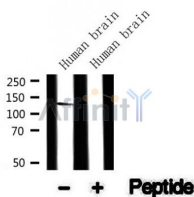
Immunogen: A synthesized peptide derived from human PER1.

Uniprot: O15534

Subcellular Location: Nucleus. Cytoplasm. Mainly nuclear. Nucleocytoplasmic shuttling is effected by interaction with other circadian core oscillator proteins and/or by phosphorylation. Retention of PER1 in the cytoplasm occurs through PER1-PER2 heterodimer formation or by interaction with CSNK1E and/or phosphorylation which appears to mask the PER1 nuclear localization signal. Also translocated to the nucleus by CRY1 or CRY2.

Tissue Specificity: Widely expressed. Expressed in hair follicles (at protein level).Found in heart, brain, placenta, lung, liver, skeletal muscle, pancreas, kidney, spleen, thymus, prostate, testis, ovary and small intestine. Highest level in skeletal muscle.

Storage Condition and Buffer: Rabbit IgG in phosphate buffered saline , pH 7.4, 150mM NaCl, 0.02% sodium azide and 50% glycerol.Store at -20 °C.Stable for 12 months from date of receipt.



Western blot analysis of PER1 in lysates of Human brain, using PER1 Ab(AF4602).

IMPORTANT: For western blot, incubate membrane with diluted primary Ab in 5% w/v milk , 1X TBS, 0.1% Tween@20 at 4°C with gentle shaking, overnight.



Affinity Biosciences

website:www.affbiotech.com

order:order@affbiotech.com

For Research Use Only. Not for use in diagnostic and therapeutic procedures. Not for resale without express authorization.