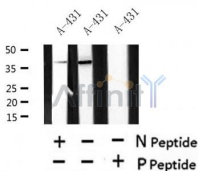


## Phospho-MERIT40 (Ser29) Ab

Cat.#: AF4498	Concn.: 1mg/ml	Mol.Wt.: 40kDa
Size: 50ul,100ul,200ul	Source: Rabbit	Clonality: Polyclonal

Application:	WB 1:500-1:2000
Reactivity:	Human,Mouse,Rat
Purification:	The Ab is from purified rabbit serum by affinity purification via sequential chromatography on phospho- and non-phospho-peptide affinity columns.
Specificity:	Phospho-MERIT40 (Ser29) Ab detects endogenous levels of MERIT40 only when phosphorylated at Ser29.
Immunogen:	A synthesized peptide derived from human MERIT40 around the phosphorylation site of Ser29.
Uniprot:	Q9NWX8
Subcellular Location:	Cytoplasm. Nucleus. Localizes at sites of DNA damage at double-strand breaks.
Similarity:	The VWFA-like region is similar to the VWFA domain. Its presence reveals similarities between the structure of the 19S proteasome and the BRCA1-A complexes.Belongs to the BABAM1 family.
Storage Condition and Buffer:	Rabbit IgG in phosphate buffered saline , pH 7.4, 150mM NaCl, 0.02% sodium azide and 50% glycerol.Store at -20 °C.Stable for 12 months from date of receipt.



Western blot analysis of Phospho-MERIT40 (Ser29) in lysates of A-431 , using Phospho-MERIT40 (Ser29) Ab(AF4498).

**IMPORTANT:** For western blot, incubate membrane with diluted primary Ab in 5% w/v milk , 1X TBS, 0.1% Tween@20 at 4°C with gentle shaking, overnight.

For Research Use Only. Not for use in diagnostic and therapeutic procedures. Not for resale without express authorization.