

Phospho-PINK1 (T313) Ab

Cat.#: AF4491
 Size: 50ul,100ul,200ul

Concn.: 1mg/ml
 Source: Rabbit

Mol.Wt.: 66kDa
 Clonality: Polyclonal

Application: WB 1:500-1:2000

Reactivity: Human,Mouse

Purification: The Ab is from purified rabbit serum by affinity purification via sequential chromatography on phospho- and non-phospho-peptide affinity columns.

Specificity: Phospho-PINK1 (T313) Ab detects endogenous levels of PINK1 only when phosphorylated at T313.

Immunogen: A synthesized peptide derived from human PINK1 around the phosphorylation site of T313.

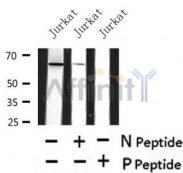
Uniprot: Q9BXM7

Subcellular Location: Mitochondrion outer membrane. Cytoplasm > cytosol.

Tissue Specificity: Highly expressed in heart, skeletal muscle and testis, and at lower levels in brain, placenta, liver, kidney, pancreas, prostate, ovary and small intestine. Present in the embryonic testis from an early stage of development.

Similarity: Belongs to the protein kinase superfamily. Ser/Thr protein kinase family.

Storage Condition and Buffer: Rabbit IgG in phosphate buffered saline , pH 7.4, 150mM NaCl, 0.02% sodium azide and 50% glycerol.Store at -20 °C.Stable for 12 months from date of receipt.



Western blot analysis of Phospho-PINK1 (T313) in lysates of Jurkat , using Phospho-PINK1 (T313) Ab(AF4491).

IMPORTANT: For western blot, incubate membrane with diluted primary Ab in 5% w/v milk , 1X TBS, 0.1% Tween@20 at 4°C with gentle shaking, overnight.



Affinity Biosciences
website: www.affbiotech.com
order: order@affbiotech.com

procedures. Not for resale without express authorization.