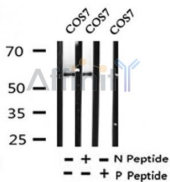


## Phospho-CD226/DNAM-1 (Ser329) Ab

Cat.#: AF4478	Concn.: 1mg/ml	Mol.Wt.: 58kDa
Size: 50ul,100ul,200ul	Source: Rabbit	Clonality: Polyclonal

Application:	WB 1:500-1:2000
Reactivity:	Human
Purification:	The Ab is from purified rabbit serum by affinity purification via sequential chromatography on phospho-peptide and non-phospho-peptide affinity columns.
Specificity:	CD226/DNAM-1 (Phospho-Ser329) Ab detects endogenous levels of CD226/DNAM-1 only when phosphorylated at Ser329.
Immunogen:	A synthesized peptide derived from human CD226/DNAM-1 around the phosphorylation site of Ser329.
Uniprot:	Q15762
Subcellular Location:	Membrane.
Tissue Specificity:	Expressed by peripheral blood T-lymphocytes.
Storage Condition and Buffer:	Rabbit IgG in phosphate buffered saline , pH 7.4, 150mM NaCl, 0.02% sodium azide and 50% glycerol.Store at -20 °C.Stable for 12 months from date of receipt.



Western blot analysis of CD226/DNAM-1 (Phospho-Ser329) in lysates of COS7 , using CD226/DNAM-1 (Phospho-Ser329) Ab(AF4478).

**IMPORTANT:** For western blot, incubate membrane with diluted primary Ab in 5% w/v milk , 1X TBS, 0.1% Tween@20 at 4°C with gentle shaking, overnight.

For Research Use Only. Not for use in diagnostic and therapeutic procedures. Not for resale without express authorization.