

## Phospho-p90 RSK (Thr573) Ab

Cat.#: AF4477  
 Size: 50ul,100ul,200ul

Concn.: 1mg/ml  
 Source: Rabbit

Mol.Wt.: 90kDa  
 Clonality: Polyclonal

**Application:** WB 1:500-1:2000

**Reactivity:** Human,Mouse,Rat

**Purification:** The Ab is from purified rabbit serum by affinity purification via sequential chromatography on phospho-peptide and non-phospho-peptide affinity columns.

**Specificity:** p90 RSK (Phospho-Thr573) Ab detects endogenous levels of p90 RSK only when phosphorylated at Thr573.

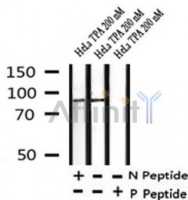
**Immunogen:** A synthesized peptide derived from human p90 RSK around the phosphorylation site of Thr573.

**Uniprot:** Q15418

**Subcellular Location:** Nucleus;

**Similarity:** Belongs to the protein kinase superfamily. AGC Ser/Thr protein kinase family. S6 kinase subfamily.

**Storage Condition and Buffer:** Rabbit IgG in phosphate buffered saline , pH 7.4, 150mM NaCl, 0.02% sodium azide and 50% glycerol.Store at -20 °C.Stable for 12 months from date of receipt.



Western blot analysis of p90 RSK (Phospho-Thr573) in lysates of HeLa TPA 200 nM, using p90 RSK (Phospho-Thr573) Ab(AF4477).

**IMPORTANT:** For western blot, incubate membrane with diluted primary Ab in 5% w/v milk , 1X TBS, 0.1% Tween@20 at 4°C with gentle shaking, overnight.

For Research Use Only. Not for use in diagnostic and therapeutic procedures. Not for resale without express authorization.