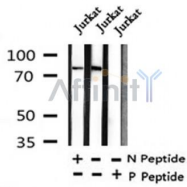


## Phospho-Breast Tumor Kinase (Tyr447) Ab

Cat.#: AF4468	Concn.: 1mg/ml	Mol.Wt.: 77kDa
Size: 50ul,100ul,200ul	Source: Rabbit	Clonality: Polyclonal

Application:	WB 1:500-1:2000
Reactivity:	Human
Purification:	The Ab is from purified rabbit serum by affinity purification via sequential chromatography on phospho-peptide and non-phospho-peptide affinity columns.
Specificity:	Breast Tumor Kinase (Phospho-Tyr447) Ab detects endogenous levels of Breast Tumor Kinase only when phosphorylated at Tyr447.
Immunogen:	A synthesized peptide derived from human Breast Tumor Kinase around the phosphorylation site of Tyr447.
Uniprot:	Q13882
Subcellular Location:	Cytoplasm. Nucleus. Colocalizes with KHDRBS1, KHDRBS2 or KHDRBS3, within the nucleus. In secretory epithelial cells from prostate adenocarcinoma, nuclear localization is higher in low-grade and lower in high-grade regions of the tumors.
Tissue Specificity:	Epithelia-specific. Very high level in colon and high levels in small intestine and prostate, and low levels in some fetal tissues. Not expressed in breast or ovarian tissue but expressed in high percentage of breast and ovarian cancers. Also overexpressed in some metastatic melanomas, lymphomas, colon cancers, squamous cell carcinomas and prostate cancers. Also found in melanocytes. Not expressed in heart, brain, placenta, lung, liver, skeletal muscle, kidney and pancreas. Isoform 2 is present in prostate epithelial cell lines derived from normal prostate and prostate adenocarcinomas, as well as in a variety of cell lines.
Similarity:	The SH3 domain plays a major role in substrate interactions. The SH2 domain of PTK6 plays a role in protein-protein interactions, but is likely more important for the regulation of catalytic activity. Belongs to the protein kinase superfamily. Tyr protein kinase family. BRK/PTK6/SIK subfamily.
Storage Condition and Buffer:	Rabbit IgG in phosphate buffered saline , pH 7.4, 150mM NaCl, 0.02% sodium azide and 50% glycerol. Store at -20 °C. Stable for 12 months from date of receipt.



Western blot analysis of Breast Tumor Kinase (Phospho-Tyr447) in lysates of Jurkat , using Breast Tumor Kinase (Phospho-Tyr447) Ab(AF4468).

**IMPORTANT:** For western blot, incubate membrane with diluted primary Ab in 5% w/v milk , 1X TBS, 0.1% Tween@20 at 4°C with gentle shaking, overnight.

For Research Use Only. Not for use in diagnostic and therapeutic procedures. Not for resale without express authorization.