

Phospho-PPIG (Ser376) Ab

Cat.#: AF4466	Concn.: 1mg/ml	Mol.Wt.: 110kDa
Size: 50ul,100ul,200ul	Source: Rabbit	Clonality: Polyclonal

Application: WB 1:500-1:2000

Reactivity: Human,Mouse,Rat

Purification: The Ab is from purified rabbit serum by affinity purification via sequential chromatography on phospho- and non-phospho-peptide affinity columns.

Specificity: Phospho-PPIG (Ser376) Ab detects endogenous levels of PPIG only when phosphorylated at Ser376.

Immunogen: A synthesized peptide derived from human PPIG around the phosphorylation site of Ser376.

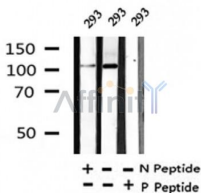
Uniprot: Q13427

Subcellular Location: Nucleus matrix. Nucleus speckle. Colocalizes with RNA splicing factors at nuclear speckles.

Tissue Specificity: Ubiquitous.

Similarity: The RS domain is required for the interaction with the phosphorylated C-terminal domain of RNA polymerase II.

Storage Condition and Buffer: Rabbit IgG in phosphate buffered saline , pH 7.4, 150mM NaCl, 0.02% sodium azide and 50% glycerol.Store at -20 °C.Stable for 12 months from date of receipt.



Western blot analysis of Phospho-PPIG (Ser376) in lysates of 293 , using Phospho-PPIG (Ser376) Ab(AF4466).

IMPORTANT: For western blot, incubate membrane with diluted primary Ab in 5% w/v milk , 1X TBS, 0.1% Tween@20 at 4°C with gentle shaking, overnight.

For Research Use Only. Not for use in diagnostic and therapeutic procedures. Not for resale without express authorization.