

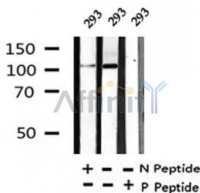
Phospho-PPIG (Ser376) Ab

Cat.#: AF4466
 Size: 50ul,100ul,200ul

Concn.: 1mg/ml
 Source: Rabbit

Mol.Wt.: 110kDa
 Clonality: Polyclonal

| | |
|-------------------------------|--|
| Application: | WB 1:500-1:2000 |
| Reactivity: | Human,Mouse,Rat |
| Purification: | The Ab is from purified rabbit serum by affinity purification via sequential chromatography on phospho- and non-phospho-peptide affinity columns. |
| Specificity: | Phospho-PPIG (Ser376) Ab detects endogenous levels of PPIG only when phosphorylated at Ser376. |
| Immunogen: | A synthesized peptide derived from human PPIG around the phosphorylation site of Ser376. |
| Uniprot: | Q13427 |
| Subcellular Location: | Nucleus matrix. Nucleus speckle. Colocalizes with RNA splicing factors at nuclear speckles. |
| Tissue Specificity: | Ubiquitous. |
| Similarity: | The RS domain is required for the interaction with the phosphorylated C-terminal domain of RNA polymerase II. |
| Storage Condition and Buffer: | Rabbit IgG in phosphate buffered saline , pH 7.4, 150mM NaCl, 0.02% sodium azide and 50% glycerol.Store at -20 °C.Stable for 12 months from date of receipt. |



Western blot analysis of Phospho-PPIG (Ser376) in lysates of 293 , using Phospho-PPIG (Ser376) Ab(AF4466).

IMPORTANT: For western blot, incubate membrane with diluted primary Ab in 5% w/v milk , 1X TBS, 0.1% Tween@20 at 4°C with gentle shaking, overnight.

For Research Use Only. Not for use in diagnostic and therapeutic procedures. Not for resale without express authorization.