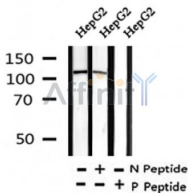


## Phospho-PLD1 (Thr147) Ab

|                        |                |                       |
|------------------------|----------------|-----------------------|
| Cat.#: AF4465          | Concn.: 1mg/ml | Mol.Wt.: 120kDa       |
| Size: 50ul,100ul,200ul | Source: Rabbit | Clonality: Polyclonal |

|                               |  |
|-------------------------------|--|
| Application:                  | WB 1:500-1:2000  |
| Reactivity:                   | Human,Mouse,Rat  |
| Purification:                 | The Ab is from purified rabbit serum by affinity purification via sequential chromatography on phospho- and non-phospho-peptide affinity columns.            |
| Specificity:                  | Phospho-PLD1 (Thr147) Ab detects endogenous levels of PLD1 only when phosphorylated at Thr147.   |
| Immunogen:                    | A synthesized peptide derived from human PLD1 around the phosphorylation site of Thr147.   |
| Uniprot:                      | Q13393   |
| Subcellular Location:         | Cytoplasm > perinuclear region. Endoplasmic reticulum membrane. Golgi apparatus membrane. Late endosome membrane.  |
| Tissue Specificity:           | Expressed abundantly in the pancreas and heart and at high levels in brain, placenta, spleen, uterus and small intestine.                                    |
| Similarity:                   | Belongs to the phospholipase D family.   |
| Storage Condition and Buffer: | Rabbit IgG in phosphate buffered saline , pH 7.4, 150mM NaCl, 0.02% sodium azide and 50% glycerol.Store at -20 °C.Stable for 12 months from date of receipt. |



Western blot analysis of Phospho-PLD1 (Thr147) in lysates of HepG2 , using Phospho-PLD1 (Thr147) Ab(AF4465).

**IMPORTANT:** For western blot, incubate membrane with diluted primary Ab in 5% w/v milk , 1X TBS, 0.1% Tween@20 at 4°C with gentle shaking, overnight.