

Phospho-FOX L2 (Ser238) Ab

Cat.#: AF4449
 Size: 50ul,100ul,200ul

Concn.: 1mg/ml
 Source: Rabbit

Mol.Wt.: 50kDa
 Clonality: Polyclonal

Application: WB 1:500-1:2000

Reactivity: Human,Mouse

Purification: The Ab is from purified rabbit serum by affinity purification via sequential chromatography on phospho-peptide and non-phospho-peptide affinity columns.

Specificity: FOX L2 (Phospho-Ser238) Ab detects endogenous levels of FOX L2 only when phosphorylated at Ser238.

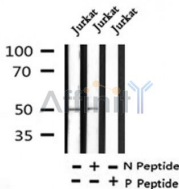
Immunogen: A synthesized peptide derived from human FOX L2 around the phosphorylation site of Ser238.

Uniprot: P58012

Subcellular Location: Nucleus;

Tissue Specificity: In addition to its expression in the developing eyelid, it is transcribed very early in somatic cells of the developing gonad (before sex determination) and its expression persists in the follicular cells of the adult ovary.

Storage Condition and Buffer: Rabbit IgG in phosphate buffered saline , pH 7.4, 150mM NaCl, 0.02% sodium azide and 50% glycerol.Store at -20 °C.Stable for 12 months from date of receipt.



Western blot analysis of FOX L2 (Phospho-Ser238) in lysates of Jurkat , using FOX L2 (Phospho-Ser238) Ab(AF4449).

IMPORTANT: For western blot, incubate membrane with diluted primary Ab in 5% w/v milk , 1X TBS, 0.1% Tween@20 at 4°C with gentle shaking, overnight.

For Research Use Only. Not for use in diagnostic and therapeutic procedures. Not for resale without express authorization.