

## Phospho-FOXL2 (Ser238) Ab

Cat.#: AF4449  
 Size: 50ul,100ul,200ul

Concn.: 1mg/ml  
 Source: Rabbit

Mol.Wt.: 50kDa  
 Clonality: Polyclonal

**Application:** WB 1:500-1:2000

**Reactivity:** Human,Mouse

**Purification:** The Ab is from purified rabbit serum by affinity purification via sequential chromatography on phospho-peptide and non-phospho-peptide affinity columns.

**Specificity:** FOXL2 (Phospho-Ser238) Ab detects endogenous levels of FOXL2 only when phosphorylated at Ser238.

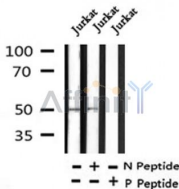
**Immunogen:** A synthesized peptide derived from human FOXL2 around the phosphorylation site of Ser238.

**Uniprot:** P58012

**Subcellular Location:** Nucleus;

**Tissue Specificity:** In addition to its expression in the developing eyelid, it is transcribed very early in somatic cells of the developing gonad (before sex determination) and its expression persists in the follicular cells of the adult ovary.

**Storage Condition and Buffer:** Rabbit IgG in phosphate buffered saline , pH 7.4, 150mM NaCl, 0.02% sodium azide and 50% glycerol.Store at -20 °C.Stable for 12 months from date of receipt.



Western blot analysis of FOXL2 (Phospho-Ser238) in lysates of Jurkat , using FOXL2 (Phospho-Ser238) Ab(AF4449).

**IMPORTANT:** For western blot, incubate membrane with diluted primary Ab in 5% w/v milk , 1X TBS, 0.1% Tween@20 at 4°C with gentle shaking, overnight.

For Research Use Only. Not for use in diagnostic and therapeutic procedures. Not for resale without express authorization.