

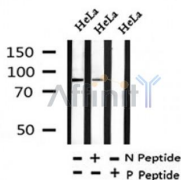
## Phospho-VCP (Ser352) Ab

Cat.#: AF4447  
 Size: 50ul,100ul,200ul

Concn.: 1mg/ml  
 Source: Rabbit

Mol.Wt.: 89kDa  
 Clonality: Polyclonal

Application:	WB 1:500-1:2000
Reactivity:	Human,Mouse,Rat
Purification:	The Ab is from purified rabbit serum by affinity purification via sequential chromatography on phospho-peptide and non-phospho-peptide affinity columns.
Specificity:	VCP (Phospho-Ser352) Ab detects endogenous levels of VCP only when phosphorylated at Ser352.
Immunogen:	A synthesized peptide derived from human VCP around the phosphorylation site of Ser352.
Uniprot:	P55072
Subcellular Location:	Cytoplasm > cytosol. Nucleus. Present in the neuronal hyaline inclusion bodies specifically found in motor neurons from amyotrophic lateral sclerosis patients. Present in the Lewy bodies specifically found in neurons from Parkinson disease patients.
Similarity:	The PIM (PUB-interaction motif) motif mediates interaction with the PUB domain of RNF31.Belongs to the AAA ATPase family.
Storage Condition and Buffer:	Rabbit IgG in phosphate buffered saline , pH 7.4, 150mM NaCl, 0.02% sodium azide and 50% glycerol.Store at -20 °C.Stable for 12 months from date of receipt.



Western blot analysis of VCP (Phospho-Ser352) in lysates of HeLa, using VCP (Phospho-Ser352) Ab(AF4447).

**IMPORTANT:** For western blot, incubate membrane with diluted primary Ab in 5% w/v milk , 1X TBS, 0.1% Tween@20 at 4°C with gentle shaking, overnight.



**Affinity Biosciences**  
website: [www.affbiotech.com](http://www.affbiotech.com)  
order: [order@affbiotech.com](mailto:order@affbiotech.com)

---

procedures. Not for resale without express authorization.