

Phospho-KIF11/Eg5 (Thr926) Ab

| | | |
|------------------------|----------------|-----------------------|
| Cat.#: AF4445 | Concn.: 1mg/ml | Mol.Wt.: 120kDa |
| Size: 50ul,100ul,200ul | Source: Rabbit | Clonality: Polyclonal |

Application: WB 1:500-1:2000

Reactivity: Human,Mouse,Rat

Purification: The Ab is from purified rabbit serum by affinity purification via sequential chromatography on phospho-peptide and non-phospho-peptide affinity columns.

Specificity: KIF11/Eg5 (Phospho-Thr926) Ab detects endogenous levels of KIF11/Eg5 only when phosphorylated at Thr926.

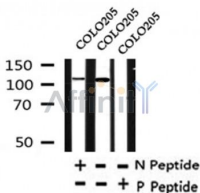
Immunogen: A synthesized peptide derived from human KIF11/Eg5 around the phosphorylation site of Thr926.

Uniprot: P52732

Subcellular Location: Cytoplasm. Cytoplasm > cytoskeleton > spindle pole.

Similarity: Belongs to the TRAFAC class myosin-kinesin ATPase superfamily. Kinesin family. BimC subfamily.

Storage Condition and Buffer: Rabbit IgG in phosphate buffered saline , pH 7.4, 150mM NaCl, 0.02% sodium azide and 50% glycerol.Store at -20 °C.Stable for 12 months from date of receipt.



Western blot analysis of KIF11/Eg5 (Phospho-Thr926) in lysates of COLO205, using KIF11/Eg5 (Phospho-Thr926) Ab(AF4445).

IMPORTANT: For western blot, incubate membrane with diluted primary Ab in 5% w/v milk , 1X TBS, 0.1% Tween@20 at 4°C with gentle shaking, overnight.

For Research Use Only. Not for use in diagnostic and therapeutic procedures. Not for resale without express authorization.