

## Phospho-KIF11/Eg5 (Thr926) Ab

Cat.#: AF4445	Concn.: 1mg/ml	Mol.Wt.: 120kDa
Size: 50ul,100ul,200ul	Source: Rabbit	Clonality: Polyclonal

**Application:** WB 1:500-1:2000

**Reactivity:** Human, Mouse, Rat

**Purification:** The Ab is from purified rabbit serum by affinity purification via sequential chromatography on phospho-peptide and non-phospho-peptide affinity columns.

**Specificity:** KIF11/Eg5 (Phospho-Thr926) Ab detects endogenous levels of KIF11/Eg5 only when phosphorylated at Thr926.

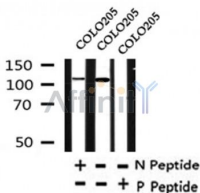
**Immunogen:** A synthesized peptide derived from human KIF11/Eg5 around the phosphorylation site of Thr926.

**Uniprot:** P52732

**Subcellular Location:** Cytoplasm. Cytoplasm > cytoskeleton > spindle pole.

**Similarity:** Belongs to the TRAFAC class myosin-kinesin ATPase superfamily. Kinesin family. BimC subfamily.

**Storage Condition and Buffer:** Rabbit IgG in phosphate buffered saline, pH 7.4, 150mM NaCl, 0.02% sodium azide and 50% glycerol. Store at -20 °C. Stable for 12 months from date of receipt.



Western blot analysis of KIF11/Eg5 (Phospho-Thr926) in lysates of COLO205, using KIF11/Eg5 (Phospho-Thr926) Ab(AF4445).

**IMPORTANT:** For western blot, incubate membrane with diluted primary Ab in 5% w/v milk, 1X TBS, 0.1% Tween@20 at 4°C with gentle shaking, overnight.

For Research Use Only. Not for use in diagnostic and therapeutic procedures. Not for resale without express authorization.