

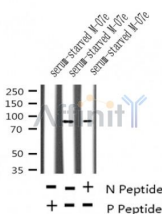
Phospho-TPOR (Tyr626) Ab

Cat.#: AF4429
 Size: 50ul,100ul,200ul

Concn.: 1mg/ml
 Source: Rabbit

Mol.Wt.: 85-90kDa
 Clonality: Polyclonal

Application:	WB 1:500-1:2000
Reactivity:	Human,Mouse,Rat
Purification:	The Ab is from purified rabbit serum by affinity purification via sequential chromatography on phospho- and non-phospho-peptide affinity columns.
Specificity:	Phospho-TPOR (Tyr626) Ab detects endogenous levels of TPOR only when phosphorylated at Tyr626.
Immunogen:	A synthesized peptide derived from human TPOR around the phosphorylation site of Tyr626.
Uniprot:	P40238
Subcellular Location:	Membrane.
Tissue Specificity:	Expressed at a low level in a large number of cells of hematopoietic origin. Isoform 1 and isoform 2 are always found to be coexpressed.
Similarity:	The WSXWS motif appears to be necessary for proper protein folding and thereby efficient intracellular transport and cell-surface receptor binding.The box 1 motif is required for JAK interaction and/or activation.Belongs to the type I cytokine receptor family. Type 1 subfamily.
Storage Condition and Buffer:	Rabbit IgG in phosphate buffered saline , pH 7.4, 150mM NaCl, 0.02% sodium azide and 50% glycerol.Store at -20 °C.Stable for 12 months from date of receipt.



Western blot analysis of Phospho-TPOR (Tyr626) in lysates of serum-starved M-07e, using Phospho-TPOR (Tyr626) Ab(AF4429).

IMPORTANT: For western blot, incubate membrane with diluted primary Ab in 5% w/v milk , 1X TBS, 0.1% Tween@20 at 4°C with gentle shaking, overnight.



Affinity Biosciences

website: www.affbiotech.com

order: order@affbiotech.com

For Research Use Only. Not for use in diagnostic and therapeutic procedures. Not for resale without express authorization.