

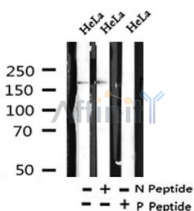
Phospho-Myosin IIa (Ser1943) Ab

Cat.#: AF4425
Size: 50ul,100ul,200ul

Concn.: 1mg/ml
Source: Rabbit

Mol.Wt.: 226kDa
Clonality: Polyclonal

Application:	WB 1:500-1:2000
Reactivity:	Human,Mouse,Rat
Purification:	The Ab is from purified rabbit serum by affinity purification via sequential chromatography on phospho- and non-phospho-peptide affinity columns.
Specificity:	Phospho-Myosin IIa (Ser1943) Ab detects endogenous levels of Myosin IIa only when phosphorylated at Ser1943.
Immunogen:	A synthesized peptide derived from human Myosin IIa around the phosphorylation site of Ser1943.
Uniprot:	P35579
Subcellular Location:	Cytoskeleton;
Tissue Specificity:	In the kidney, expressed in the glomeruli. Also expressed in leukocytes.
Similarity:	The rodlike tail sequence is highly repetitive, showing cycles of a 28-residue repeat pattern composed of 4 heptapeptides, characteristic for alpha-helical coiled coils.Belongs to the TRAFAC class myosin-kinesin ATPase superfamily. Myosin family.
Storage Condition and Buffer:	Rabbit IgG in phosphate buffered saline , pH 7.4, 150mM NaCl, 0.02% sodium azide and 50% glycerol.Store at -20 °C.Stable for 12 months from date of receipt.



Western blot analysis of Phospho-Myosin IIa (Ser1943) in lysates of HeLa, using Phospho-Myosin IIa (Ser1943) Ab(AF4425).

IMPORTANT: For western blot, incubate membrane with diluted primary Ab in 5% w/v milk , 1X TBS, 0.1% Tween@20 at 4°C with gentle shaking, overnight.



Affinity Biosciences

website:www.affbiotech.com

order:order@affbiotech.com

For Research Use Only. Not for use in diagnostic and therapeutic procedures. Not for resale without express authorization.