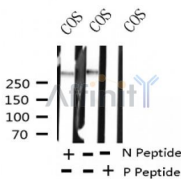


Phospho-MAP2 (Thr1620/1623) Ab

Cat.#: AF4402	Concn.: 1mg/ml	Mol.Wt.: 82kDa,280kDa
Size: 50ul,100ul,200ul	Source: Rabbit	Clonality: Polyclonal

Application:	WB 1:500-1:2000
Reactivity:	Human,Mouse,Rat
Purification:	The Ab is from purified rabbit serum by affinity purification via sequential chromatography on phospho- and non-phospho-peptide affinity columns.
Specificity:	Phospho-MAP2 (Thr1620/1623) Ab detects endogenous levels of MAP2 only when phosphorylated at Thr1620/1623.
Immunogen:	A synthesized peptide derived from human MAP2 around the phosphorylation site of Thr1620/1623.
Uniprot:	P11137
Subcellular Location:	Cytoplasm, cytoskeleton.
Storage Condition and Buffer:	Rabbit IgG in phosphate buffered saline , pH 7.4, 150mM NaCl, 0.02% sodium azide and 50% glycerol.Store at -20 °C.Stable for 12 months from date of receipt.



Western blot analysis of Phospho-MAP2 (Thr1620/1623) in lysates of COS , using Phospho-MAP2 (Thr1620/1623) Ab(AF4402).

IMPORTANT: For western blot, incubate membrane with diluted primary Ab in 5% w/v milk , 1X TBS, 0.1% Tween@20 at 4°C with gentle shaking, overnight.

For Research Use Only. Not for use in diagnostic and therapeutic procedures. Not for resale without express authorization.