

## Phospho-5-Lipoxygenase (Ser272) Ab

Cat.#: AF4399	Concn.: 1mg/ml	Mol.Wt.: 78kDa
Size: 50ul,100ul,200ul	Source: Rabbit	Clonality: Polyclonal

**Application:** WB 1:500-1:2000

**Reactivity:** Human,Mouse,Rat

**Purification:** The Ab is from purified rabbit serum by affinity purification via sequential chromatography on phospho- and non-phospho-peptide affinity columns.

**Specificity:** Phospho-5-Lipoxygenase (Ser272) Ab detects endogenous levels of 5-Lipoxygenase only when phosphorylated at Ser272.

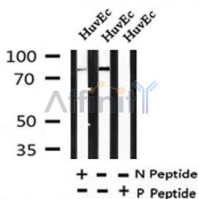
**Immunogen:** A synthesized peptide derived from human 5-Lipoxygenase around the phosphorylation site of Ser272.

**Uniprot:** P09917

**Subcellular Location:** Cytoplasm. Nucleus matrix. Nucleus membrane. Shuttles between cytoplasm and nucleus. Found exclusively in the nucleus, when phosphorylated on Ser-272. Calcium binding promotes translocation from the cytosol and the nuclear matrix to the nuclear envelope and membrane association.

**Similarity:** Belongs to the lipoxygenase family.

**Storage Condition and Buffer:** Rabbit IgG in phosphate buffered saline , pH 7.4, 150mM NaCl, 0.02% sodium azide and 50% glycerol.Store at -20 °C.Stable for 12 months from date of receipt.



Western blot analysis of Phospho-5-Lipoxygenase (Ser272) in lysates of HuvEc, using Phospho-5-Lipoxygenase (Ser272) Ab(AF4399).

**IMPORTANT:** For western blot, incubate membrane with diluted primary Ab in 5% w/v milk , 1X TBS, 0.1% Tween@20 at 4°C with gentle shaking, overnight.