

Phospho-EPHA4(Tyr602) Ab

Cat.#: AF4375
Size: 50ul,100ul,200ul

Concn.: 1mg/ml
Source: Rabbit

Mol.Wt.: 135kDa
Clonality: Polyclonal

Application: WB 1:500-1:2000

Reactivity: Human,Mouse,Rat

Purification: The Ab is from purified rabbit serum by affinity purification via sequential chromatography on phospho- and non-phospho-peptide affinity columns.

Specificity: Phospho-EPHA4(Tyr602) Ab detects endogenous levels of EPHA4 only when phosphorylated at Tyr602.

Immunogen: A synthesized peptide derived from human EPHA4 around the phosphorylation site of Tyr602.

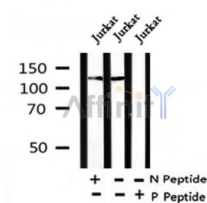
Uniprot: P54764

Subcellular Location: Membrane.

Tissue Specificity: Ubiquitous.

Similarity: The protein kinase domain mediates interaction with NGEF.Belongs to the protein kinase superfamily. Tyr protein kinase family. Ephrin receptor subfamily.

Storage Condition and Buffer: Rabbit IgG in phosphate buffered saline , pH 7.4, 150mM NaCl, 0.02% sodium azide and 50% glycerol.Store at -20 °C.Stable for 12 months from date of receipt.



Western blot analysis of Phospho-EPHA4(Tyr602) in lysates of Jurkat , using Phospho-EPHA4(Tyr602) Ab(AF4375).

IMPORTANT: For western blot, incubate membrane with diluted primary Ab in 5% w/v milk , 1X TBS, 0.1% Tween@20 at 4°C with gentle shaking, overnight.

For Research Use Only. Not for use in diagnostic and therapeutic procedures. Not for resale without express authorization.