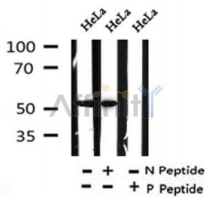


## Acetyl-alpha Tubulin (Lys40) Ab

Cat.#: AF4351	Concn.: 1mg/ml	Mol.Wt.: 52kDa
Size: 50ul,100ul,200ul	Source: Rabbit	Clonality: Polyclonal

Application:	WB 1:500-1:2000
Reactivity:	Human,Mouse,Rat
Purification:	Immunogen affinity purified.
Specificity:	alpha Tubulin (acetyl K40) Ab detects endogenous levels of alpha Tubulin (acetyl K40).
Immunogen:	A synthesized peptide derived from human alpha Tubulin (acetyl K40).
Uniprot:	P68363
Subcellular Location:	Cytoplasm > cytoskeleton.
Similarity:	Belongs to the tubulin family.
Storage Condition and Buffer:	Rabbit IgG in phosphate buffered saline , pH 7.4, 150mM NaCl, 0.02% sodium azide and 50% glycerol.Store at -20 °C.Stable for 12 months from date of receipt.



Western blot analysis of alpha Tubulin (acetyl K40) in lysates of HeLa , using alpha Tubulin (acetyl K40) Ab(AF4351).

**IMPORTANT:** For western blot, incubate membrane with diluted primary Ab in 5% w/v milk , 1X TBS, 0.1% Tween@20 at 4°C with gentle shaking, overnight.

For Research Use Only. Not for use in diagnostic and therapeutic procedures. Not for resale without express authorization.