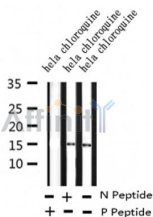


## Phospho-LC3B(Thr29) Ab

Cat.#: AF4350	Concn.: 1mg/ml	Mol.Wt.: 14kDa, 16kDa
Size: 50ul,100ul,200ul	Source: Rabbit	Clonality: Polyclonal

Application:	WB 1:500-1:2000
Reactivity:	Human,Mouse,Rat
Purification:	The Ab is from purified rabbit serum by affinity purification via sequential chromatography on phospho- and non-phospho-peptide affinity columns.
Specificity:	Phospho-LC3B(Thr29) Ab detects endogenous levels of LC3B only when phosphorylated at Thr29.
Immunogen:	A synthesized peptide derived from human LC3B around the phosphorylation site of Thr29.
Uniprot:	Q9GZQ8
Subcellular Location:	Cytoplasm > cytoskeleton. Endomembrane system. Cytoplasmic vesicle > autophagosome membrane. LC3-II binds to the autophagic membranes.
Tissue Specificity:	Most abundant in heart, brain, skeletal muscle and testis. Little expression observed in liver.
Similarity:	Belongs to the ATG8 family.
Storage Condition and Buffer:	Rabbit IgG in phosphate buffered saline , pH 7.4, 150mM NaCl, 0.02% sodium azide and 50% glycerol.Store at -20 °C.Stable for 12 months from date of receipt.



Western blot analysis of Phospho-LC3B(Thr29) in lysates of hela overnight chloroquine (50 uM), using Phospho-LC3B(Thr29) Ab(AF4350).

**IMPORTANT:** For western blot, incubate membrane with diluted primary Ab in 5% w/v milk , 1X TBS, 0.1% Tween@20 at 4°C with gentle shaking, overnight.