

## Phospho-NAKED2(Tyr247) Ab

Cat.#: AF4347	Concn.: 1mg/ml	Mol.Wt.: 50kDa
Size: 50ul,100ul,200ul	Source: Rabbit	Clonality: Polyclonal

**Application:** WB 1:500-1:2000

**Reactivity:** Human,Mouse,Rat

**Purification:** The Ab is from purified rabbit serum by affinity purification via sequential chromatography on phospho- and non-phospho-peptide affinity columns.

**Specificity:** Phospho-NAKED2(Tyr247) Ab detects endogenous levels of NAKED2 only when phosphorylated at Tyr247.

**Immunogen:** A synthesized peptide derived from human NAKED2 around the phosphorylation site of Tyr247.

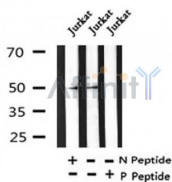
**Uniprot:** Q969F2

**Subcellular Location:** Cell membrane. Cytoplasm. Cytoplasmic vesicle.

**Tissue Specificity:** Expressed in kidney, lung, pancreas and spleen.

**Similarity:** The N-terminal domain comprising the first 217 amino acid residues is mostly unstructured.Belongs to the NKD family.

**Storage Condition and Buffer:** Rabbit IgG in phosphate buffered saline , pH 7.4, 150mM NaCl, 0.02% sodium azide and 50% glycerol.Store at -20 °C.Stable for 12 months from date of receipt.



Western blot analysis of Phospho-NAKED2(Tyr247) in lysates of Jurkat, using Phospho-NAKED2(Tyr247) Ab(AF4347).

**IMPORTANT:** For western blot, incubate membrane with diluted primary Ab in 5% w/v milk , 1X TBS, 0.1% Tween@20 at 4°C with gentle shaking, overnight.

For Research Use Only. Not for use in diagnostic and therapeutic procedures. Not for resale without express authorization.