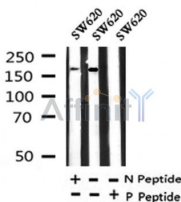


## Phospho-LRP5(Tyr1473) Ab

Cat.#: AF4345	Concn.: 1mg/ml	Mol.Wt.: 200kDa
Size: 50ul,100ul,200ul	Source: Rabbit	Clonality: Polyclonal

Application:	WB 1:500-1:2000
Reactivity:	Human,Mouse,Rat
Purification:	The Ab is from purified rabbit serum by affinity purification via sequential chromatography on phospho- and non-phospho-peptide affinity columns.
Specificity:	Phospho-LRP5(Tyr1473) Ab detects endogenous levels of LRP5 only when phosphorylated at Tyr1473.
Immunogen:	A synthesized peptide derived from human LRP5 around the phosphorylation site of Tyr1473.
Uniprot:	O75197
Subcellular Location:	Membrane. Endoplasmic reticulum. Chaperoned to the plasma membrane by MESD.
Tissue Specificity:	Widely expressed, with the highest level of expression in the liver and in aorta.
Similarity:	Belongs to the LDLR family.
Storage Condition and Buffer:	Rabbit IgG in phosphate buffered saline , pH 7.4, 150mM NaCl, 0.02% sodium azide and 50% glycerol.Store at -20 °C.Stable for 12 months from date of receipt.



Western blot analysis of Phospho-LRP5(Tyr1473) in lysates of SW620, using Phospho-LRP5(Tyr1473) Ab(AF4345).

**IMPORTANT:** For western blot, incubate membrane with diluted primary Ab in 5% w/v milk , 1X TBS, 0.1% Tween@20 at 4°C with gentle shaking, overnight.

For Research Use Only. Not for use in diagnostic and therapeutic procedures. Not for resale without express authorization.