

## Phospho-LRP5(Tyr1473) Ab

Cat.#: AF4345	Concn.: 1mg/ml	Mol.Wt.: 200kDa
Size: 50ul,100ul,200ul	Source: Rabbit	Clonality: Polyclonal

**Application:** WB 1:500-1:2000

**Reactivity:** Human,Mouse,Rat

**Purification:** The Ab is from purified rabbit serum by affinity purification via sequential chromatography on phospho- and non-phospho-peptide affinity columns.

**Specificity:** Phospho-LRP5(Tyr1473) Ab detects endogenous levels of LRP5 only when phosphorylated at Tyr1473.

**Immunogen:** A synthesized peptide derived from human LRP5 around the phosphorylation site of Tyr1473.

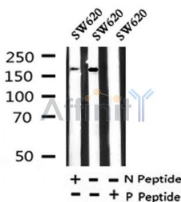
**Uniprot:** O75197

**Subcellular Location:** Membrane. Endoplasmic reticulum. Chaperoned to the plasma membrane by MESD.

**Tissue Specificity:** Widely expressed, with the highest level of expression in the liver and in aorta.

**Similarity:** Belongs to the LDLR family.

**Storage Condition and Buffer:** Rabbit IgG in phosphate buffered saline , pH 7.4, 150mM NaCl, 0.02% sodium azide and 50% glycerol.Store at -20 °C.Stable for 12 months from date of receipt.



Western blot analysis of Phospho-LRP5(Tyr1473) in lysates of SW620, using Phospho-LRP5(Tyr1473) Ab(AF4345).

**IMPORTANT:** For western blot, incubate membrane with diluted primary Ab in 5% w/v milk , 1X TBS, 0.1% Tween@20 at 4°C with gentle shaking, overnight.

For Research Use Only. Not for use in diagnostic and therapeutic procedures. Not for resale without express authorization.