

## Phospho-BRG1(Ser610) Ab

Cat.#: AF4338	Concn.: 1mg/ml	Mol.Wt.: 220kDa
Size: 50ul,100ul,200ul	Source: Rabbit	Clonality: Polyclonal

**Application:** WB 1:500-1:2000

**Reactivity:** Human,Mouse,Rat

**Purification:** The Ab is from purified rabbit serum by affinity purification via sequential chromatography on phospho- and non-phospho-peptide affinity columns.

**Specificity:** Phospho-BRG1(Ser610) Ab detects endogenous levels of BRG1 only when phosphorylated at Ser610.

**Immunogen:** A synthesized peptide derived from human BRG1 around the phosphorylation site of Ser610.

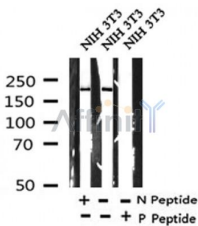
**Uniprot:** P51532

**Subcellular Location:** Nucleus.

**Tissue Specificity:** Colocalizes with ZEB1 in E-cadherin-negative cells from established lines, and stroma of normal colon as well as in de-differentiated epithelial cells at the invasion front of colorectal carcinomas (at protein level).

**Similarity:** Belongs to the SNF2/RAD54 helicase family.

**Storage Condition and Buffer:** Rabbit IgG in phosphate buffered saline , pH 7.4, 150mM NaCl, 0.02% sodium azide and 50% glycerol.Store at -20 °C.Stable for 12 months from date of receipt.



Western blot analysis of Phospho-BRG1(Ser610) in lysates of NIH 3T3, using Phospho-BRG1(Ser610) Ab(AF4338).

**IMPORTANT:** For western blot, incubate membrane with diluted primary Ab in 5% w/v milk , 1X TBS, 0.1% Tween@20 at 4°C with gentle shaking, overnight.